

\$250,000 - 11394 139 Avenue, Edmonton

MLS® #E4461046

\$250,000

3 Bedroom, 1.50 Bathroom, 1,001 sqft

Condo / Townhouse on 0.00 Acres

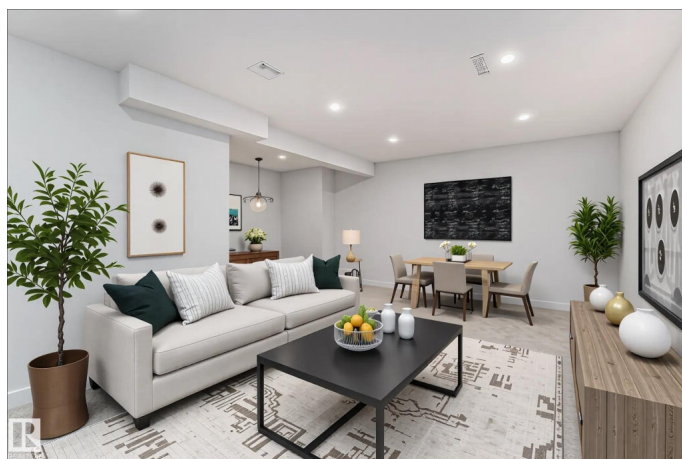
Carlisle, Edmonton, AB

Beautifully updated from top to bottom, this stylish 3-bedroom, 1.5-bath townhouse offers nearly 1,000 sq ft of comfortable living space in the well-managed Glamorgan Estates. The main floor features a bright and spacious living room, a sleek modern kitchen, and a convenient 2-piece bath. Upstairs, you'll find three generous bedrooms and a full 4-piece bathroom. The finished basement adds a large rec room and plenty of storage space. Located in the welcoming community of Carlisle, you're steps from schools, parks, public transit, shopping, the YMCA, and more. Enjoy the privacy of a fenced yard with direct access to green space, plus assigned parking. With low condo fees and nothing left to do but move in, this one is a must-see!

Built in 1977

Essential Information

MLS® #	E4461046
Price	\$250,000
Bedrooms	3
Bathrooms	1.50
Full Baths	1
Half Baths	1
Square Footage	1,001
Acres	0.00



Year Built	1977
Type	Condo / Townhouse
Sub-Type	Townhouse
Style	2 Storey
Status	Active

Community Information

Address	11394 139 Avenue
Area	Edmonton
Subdivision	Carlisle
City	Edmonton
County	ALBERTA
Province	AB
Postal Code	T5X 3L4

Amenities

Amenities	Detectors Smoke, No Animal Home, See Remarks
Parking	Stall

Interior

Appliances	Dishwasher-Built-In, Dryer, Microwave Hood Fan, Refrigerator, Stove-Electric, Washer
Heating	Forced Air-1, Natural Gas
Stories	3
Has Basement	Yes
Basement	Full, Finished

Exterior

Exterior	Wood, Vinyl
Exterior Features	Fenced, No Back Lane, Playground Nearby, Public Transportation, Schools, Shopping Nearby
Roof	Asphalt Shingles
Construction	Wood, Vinyl
Foundation	Concrete Perimeter

Additional Information

Date Listed	October 6th, 2025
Days on Market	2
Zoning	Zone 27

Condo Fee \$410

DATA IS DEEMED RELIABLE BUT IS NOT GUARANTEED ACCURATE BY THE REALTORS® ASSOCIATION OF EDMONTON. COPYRIGHT 2025 BY THE REALTORS® ASSOCIATION OF EDMONTON. ALL RIGHTS RESERVED.Trademarks are owned or controlled by the Canadian Real Estate Association (CREA) and identify real estate professionals who are members of CREA (REALTOR®, REALTORS®) and/or the quality of services they provide (MLS®, Multiple Listing Service®)

Listing information last updated on October 8th, 2025 at 4:47pm MDT