

Courtesy Of Derek Hulewicz Of RE/MAX Real Estate

# \$145,000 - 308 11441 Ellerslie Road, Edmonton

MLS® #E4448175

**\$145,000**

1 Bedroom, 1.00 Bathroom, 663 sqft  
Condo / Townhouse on 0.00 Acres

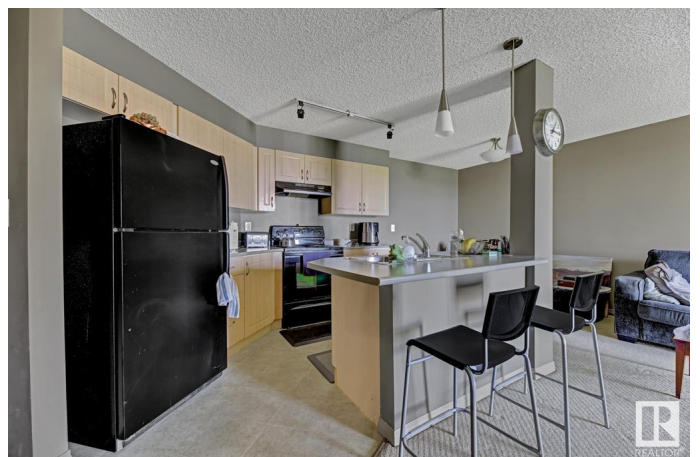
Rutherford (Edmonton), Edmonton, AB

**LIVE IN RUTHERFORD VILLAGE!** This one bedroom, 3rd floor north facing condo, is perfect for students or professionals. Features include: open concept, efficient layout, modern colors, walk through closet, covered balcony with gas BBQ, ensuite laundry, underground parking and storage room. Rutherford Village offers elevators, visitor parking and is pet friendly. All utilities are included in the condo fees including power. Located within walking distance to shopping and public transport. Quick access to Anthony Henday Drive, Calgary Trail and Edmonton Airport. **WELCOME HOME!**

Built in 2005

## Essential Information

MLS® #	E4448175
Price	\$145,000
Bedrooms	1
Bathrooms	1.00
Full Baths	1
Square Footage	663
Acres	0.00
Year Built	2005
Type	Condo / Townhouse
Sub-Type	Lowrise Apartment
Style	Single Level Apartment



Status Active

### Community Information

Address 308 11441 Ellerslie Road  
Area Edmonton  
Subdivision Rutherford (Edmonton)  
City Edmonton  
County ALBERTA  
Province AB  
Postal Code T6W 1S9

### Amenities

Amenities Intercom, Parking-Visitor, Storage-Locker Room, Vinyl Windows  
Parking Spaces 1  
Parking Heated, Underground

### Interior

Appliances Dishwasher-Built-In, Refrigerator, Stacked Washer/Dryer, Stove-Electric  
Heating Baseboard, Natural Gas  
# of Stories 4  
Stories 1  
Has Basement Yes  
Basement None, No Basement

### Exterior

Exterior Wood, Brick, Stucco  
Exterior Features Flat Site, Golf Nearby, Landscaped, Park/Reserve, Public Transportation, Schools, Shopping Nearby  
Roof Asphalt Shingles  
Construction Wood, Brick, Stucco  
Foundation Concrete Perimeter

### Additional Information

Date Listed July 17th, 2025  
Days on Market 25  
Zoning Zone 55  
Condo Fee \$453

DATA IS DEEMED RELIABLE BUT IS NOT GUARANTEED ACCURATE BY THE REALTORS® ASSOCIATION OF EDMONTON. COPYRIGHT 2025 BY THE REALTORS® ASSOCIATION OF EDMONTON. ALL RIGHTS RESERVED. Trademarks are owned or controlled by the Canadian Real Estate Association (CREA) and identify real

estate professionals who are members of CREA (REALTOR®®, REALTORS®®) and/or the quality of services they provide (MLS®®, Multiple Listing Service®®)

Listing information last updated on August 11th, 2025 at 1:02pm MDT