

\$724,800 - 610 Albany Way, Edmonton

MLS® #E4444102

\$724,800

3 Bedroom, 2.50 Bathroom, 2,307 sqft

Single Family on 0.00 Acres

Albany, Edmonton, AB

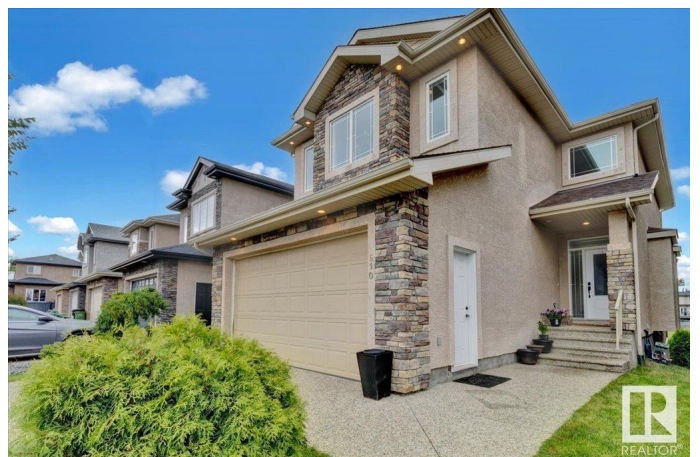
Welcome to Albany! This stunning 2-storey home nestled in a family-friendly community offers 3 bedrooms, a versatile den to be transformed into a 4th bdrm or office & 2.5 baths & WALKOUT BASEMENT! Boasting over 2,305 sqft of living space + over 945 sqft of undeveloped WALKOUT BASEMENT! The grand foyer features soaring 20-foot ceilings leads you to the main floor featuring an open-concept living room w/ expansive panel windows, contemporary fireplace for warmth & sophistication. The formal dining room overlooks the FULLY FENCED BACKYARD with serene GREEN VIEWS & a tranquil MAN-MADE POND! The gourmet kitchen features an ISLAND/BREAKFAST NOOK & GRANITE COUNTERTOPS & WALKIN PANTRY! Upstairs offers 3 bedrooms each w/ built-in closet & organizers. The primary suite offers a spa-inspired 5-piece ensuite w/ JET SOAKER TUB, double vanity, & a walk-in closet w/ CUSTOM ORGANIZERS! The unfinished WALKOUT BSMT. provides an opportunity to design a space tailored to your needs! Close to WALKING TRAILS & all amenities!

Built in 2013

Essential Information

MLS® #

E4444102



Price	\$724,800
Bedrooms	3
Bathrooms	2.50
Full Baths	2
Half Baths	1
Square Footage	2,307
Acres	0.00
Year Built	2013
Type	Single Family
Sub-Type	Detached Single Family
Style	2 Storey
Status	Active

Community Information

Address	610 Albany Way
Area	Edmonton
Subdivision	Albany
City	Edmonton
County	ALBERTA
Province	AB
Postal Code	T6P 0S3

Amenities

Amenities	Closet Organizers, Patio, Walkout Basement, See Remarks
Parking	Double Garage Attached

Interior

Interior Features	ensuite bathroom
Appliances	Dishwasher-Built-In, Dryer, Hood Fan, Oven-Built-In, Oven-Microwave, Refrigerator, Stove-Countertop Gas, Washer, Window Coverings, See Remarks
Heating	Forced Air-1, Natural Gas
Fireplace	Yes
Fireplaces	Tile Surround
Stories	2
Has Basement	Yes
Basement	Full, Unfinished

Exterior

Exterior	Wood, Stone, Stucco
Exterior Features	Back Lane, Fenced, Flat Site, Landscaped, Low Maintenance Landscape, Park/Reserve, Playground Nearby, Public Transportation, Schools, Shopping Nearby
Roof	Asphalt Shingles
Construction	Wood, Stone, Stucco
Foundation	Concrete Perimeter

School Information

Elementary	Lorelei School
Middle	Mary Butterworth School
High	Ross Sheppard School

Additional Information

Date Listed	June 24th, 2025
Days on Market	16
Zoning	Zone 27

DATA IS DEEMED RELIABLE BUT IS NOT GUARANTEED ACCURATE BY THE REALTORS® ASSOCIATION OF EDMONTON. COPYRIGHT 2025 BY THE REALTORS® ASSOCIATION OF EDMONTON. ALL RIGHTS RESERVED. Trademarks are owned or controlled by the Canadian Real Estate Association (CREA) and identify real estate professionals who are members of CREA (REALTOR®, REALTORS®) and/or the quality of services they provide (MLS®, Multiple Listing Service®)

Listing information last updated on July 10th, 2025 at 8:47pm MDT