

\$549,900 - 230 Pipestone Close, Millet

MLS® #E4442957

\$549,900

5 Bedroom, 3.00 Bathroom, 1,856 sqft

Single Family on 0.00 Acres

Millet, Millet, AB

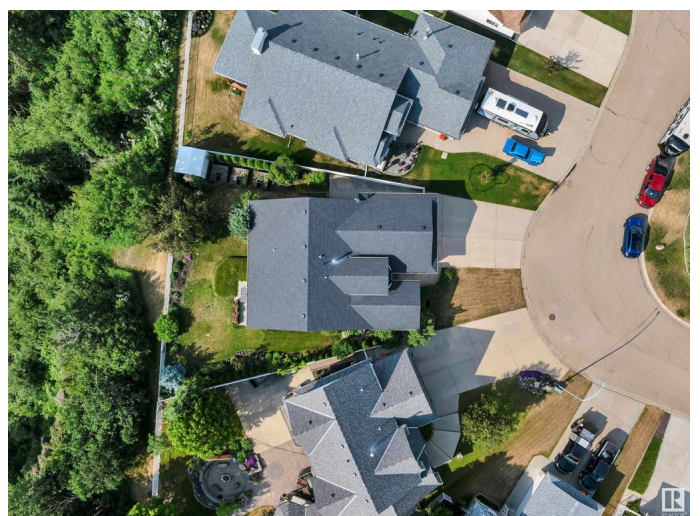
BACKING PIPESTONE CREEK! PIE LOT! GORGEOUS EXECUTIVE BUNGALOW! 23' x 23' GARAGE! Searching for the illusive updated home with ravine views & oversized garage? This 1856 sq ft, 5 bed, 3 bath stunner in Moonen Heights shows a 10! Feat: vinyl plank flooring, newly completed basement bathroom & bedrooms, upgraded lighting, paint, gas fireplace, main floor laundry & more! Large entryway leads to the family room w/ vaulted ceiling; perfect spot for family visits. Large dining space wraps around into the kitchen, eat in dining, corner pantry, and living room, w/ access to the back yard. 3 bedrooms up, including the primary bed w/ walk in closet, custom closet, & 4 pce ensuite. The basement is partially finished, w/ 2 big bedrooms, stunning 3 pce bath w/ in floor heating, future rec room, & storage. The pie shaped backyard is a dream! Covered patio area, spacious yard full of trees, shrubs,; abundance of sunlight & privacy. Gate for ravine / trail access to explore all summer! A treat to view, don't miss it!

Built in 2000

Essential Information

MLS® # E4442957

Price \$549,900



Bedrooms	5
Bathrooms	3.00
Full Baths	3
Square Footage	1,856
Acres	0.00
Year Built	2000
Type	Single Family
Sub-Type	Detached Single Family
Style	Bungalow
Status	Active

Community Information

Address	230 Pipestone Close
Area	Millet
Subdivision	Millet
City	Millet
County	ALBERTA
Province	AB
Postal Code	T0C 1Z0

Amenities

Amenities	Patio, See Remarks
Parking	Double Garage Attached, Over Sized

Interior

Interior Features	ensuite bathroom
Appliances	Dishwasher-Built-In, Dryer, Fan-Ceiling, Microwave Hood Fan, Refrigerator, Storage Shed, Stove-Electric, Washer, Window Coverings
Heating	Forced Air-1, Natural Gas
Fireplace	Yes
Fireplaces	Insert
Stories	1
Has Basement	Yes
Basement	Full, Partially Finished

Exterior

Exterior	Wood, Stucco
Exterior Features	Backs Onto Park/Trees, Fenced, Landscaped, Private Setting, Schools, Shopping Nearby, See Remarks

Roof	Asphalt Shingles
Construction	Wood, Stucco
Foundation	Concrete Perimeter

Additional Information

Date Listed	June 18th, 2025
Days on Market	22
Zoning	Zone 80

DATA IS DEEMED RELIABLE BUT IS NOT GUARANTEED ACCURATE BY THE REALTORS® ASSOCIATION OF EDMONTON. COPYRIGHT 2025 BY THE REALTORS® ASSOCIATION OF EDMONTON. ALL RIGHTS RESERVED.Trademarks are owned or controlled by the Canadian Real Estate Association (CREA) and identify real estate professionals who are members of CREA (REALTOR®, REALTORS®) and/or the quality of services they provide (MLS®, Multiple Listing Service®)

Listing information last updated on July 10th, 2025 at 5:47am MDT