

## \$848,333 - 25 Birkshire Crescent, Sherwood Park

MLS® #E4439583

**\$848,333**

4 Bedroom, 3.00 Bathroom, 2,481 sqft

Single Family on 0.00 Acres

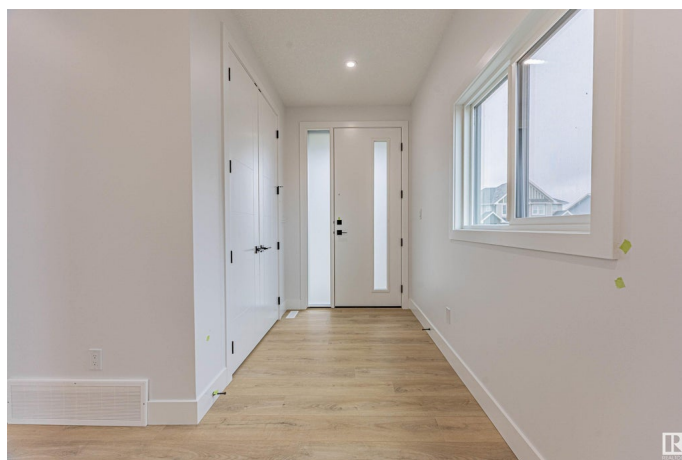
Hillshire, Sherwood Park, AB

Prepare to be wowed by this stunning 2,481 sq ft Hillshire home—modern, spacious, and move-in ready! With immediate possession and a full appliance package included at closing, everything is set for your next chapter. The main floor features a massive bedroom or office—ideal for guests or working from home. The chef-inspired kitchen boasts sleek cabinetry, quartz countertops, and a full pantry, perfectly blending style and function. Throughout the home, luxury finishes create a refined and elevated feel. Upstairs, the oversized bonus room offers endless possibilities for relaxing or entertaining, while the dedicated laundry room adds everyday convenience. With 4 bedrooms, 3 bathrooms, and a smart, open layout, this home is built for comfortable, high-end living in one of Sherwood Park's™ most desirable communities.

Built in 2025

### Essential Information

MLS® #	E4439583
Price	\$848,333
Bedrooms	4
Bathrooms	3.00
Full Baths	3
Square Footage	2,481



Acres	0.00
Year Built	2025
Type	Single Family
Sub-Type	Detached Single Family
Style	2 Storey
Status	Active

### **Community Information**

Address	25 Birkshire Crescent
Area	Sherwood Park
Subdivision	Hillshire
City	Sherwood Park
County	ALBERTA
Province	AB
Postal Code	T8B 0C6

### **Amenities**

Amenities	See Remarks
Parking	Double Garage Attached

### **Interior**

Interior Features	ensuite bathroom
Appliances	See Remarks
Heating	Forced Air-2, Natural Gas
Stories	2
Has Suite	Yes
Has Basement	Yes
Basement	Full, Unfinished

### **Exterior**

Exterior	Concrete, Stone, See Remarks, Hardie Board Siding
Exterior Features	Schools, Shopping Nearby, See Remarks, Partially Fenced
Roof	Asphalt Shingles
Construction	Concrete, Stone, See Remarks, Hardie Board Siding
Foundation	Slab

### **Additional Information**

Date Listed	May 30th, 2025
Days on Market	40

## Zoning

## Zone 25

DATA IS DEEMED RELIABLE BUT IS NOT GUARANTEED ACCURATE BY THE REALTORS® ASSOCIATION OF EDMONTON. COPYRIGHT 2025 BY THE REALTORS® ASSOCIATION OF EDMONTON. ALL RIGHTS RESERVED. Trademarks are owned or controlled by the Canadian Real Estate Association (CREA) and identify real estate professionals who are members of CREA (REALTOR®, REALTORS®) and/or the quality of services they provide (MLS®, Multiple Listing Service®)

Listing information last updated on July 9th, 2025 at 8:48am MDT