

\$265,000 - 16503 115 Street, Edmonton

MLS® #E4438524

\$265,000

3 Bedroom, 1.00 Bathroom, 932 sqft

Single Family on 0.00 Acres

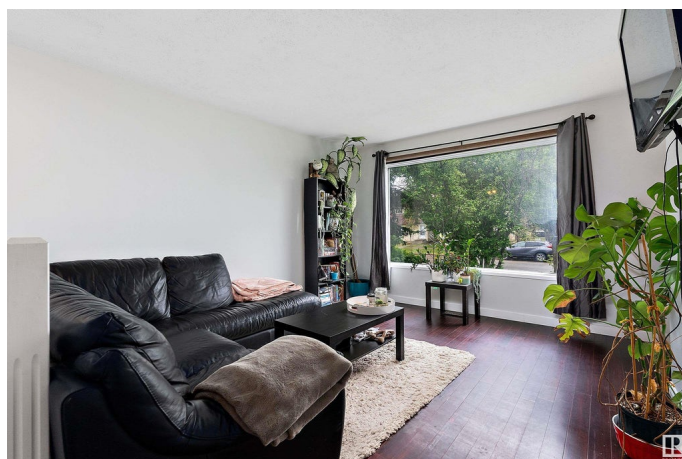
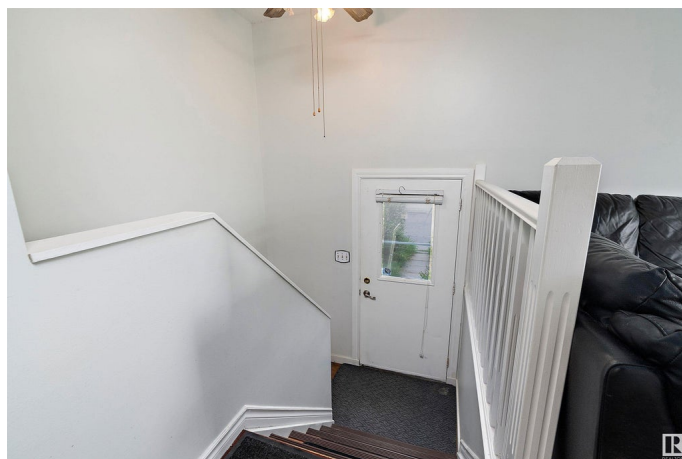
Dunluce, Edmonton, AB

Discover comfort and potential in this inviting half duplex located in the desirable community of Dunluce. Step into a welcoming open foyer that leads you upstairs to a bright and airy living room featuring a large bay window that fills the space with natural light. The adjoining kitchen is equipped with modern stainless steel appliances and offers ample cabinetry and counter space, making meal prep a breeze. Enjoy family meals or entertain guests in the spacious dining area with patio doors that open to a generous back deck—ideal for relaxing or summer BBQs. Down the hallway, you'll find a well-sized primary bedroom, two additional guest bedrooms, and a full 4-piece bathroom. The lower level features an unfinished basement, offering a blank canvas to create the space of your dreams—be it a rec room, home gym, or extra storage. Close to schools, parks, and amenities, this home is perfect for families, first-time buyers, or investors. Don't miss this fantastic opportunity!

Built in 1982

Essential Information

| | |
|-----------|-----------|
| MLS® # | E4438524 |
| Price | \$265,000 |
| Bedrooms | 3 |
| Bathrooms | 1.00 |



| | |
|----------------|---------------|
| Full Baths | 1 |
| Square Footage | 932 |
| Acres | 0.00 |
| Year Built | 1982 |
| Type | Single Family |
| Sub-Type | Half Duplex |
| Style | Bi-Level |
| Status | Active |

Community Information

| | |
|-------------|------------------|
| Address | 16503 115 Street |
| Area | Edmonton |
| Subdivision | Dunluce |
| City | Edmonton |
| County | ALBERTA |
| Province | AB |
| Postal Code | T5X 3V3 |

Amenities

| | |
|-----------|--|
| Amenities | Off Street Parking, On Street Parking, Detectors Smoke |
| Parking | No Garage, Rear Drive Access |

Interior

| | |
|--------------|---|
| Appliances | Dryer, Hood Fan, Oven-Microwave, Refrigerator, Stove-Electric, Washer |
| Heating | Forced Air-1, Natural Gas |
| Stories | 1 |
| Has Basement | Yes |
| Basement | Full, Unfinished |

Exterior

| | |
|-------------------|---|
| Exterior | Wood, Vinyl |
| Exterior Features | Back Lane, Corner Lot, Fenced, Landscaped, Playground Nearby, Public Transportation, Schools, Shopping Nearby |
| Roof | Asphalt Shingles |
| Construction | Wood, Vinyl |
| Foundation | Concrete Perimeter |

Additional Information

| | |
|-------------|----------------|
| Date Listed | May 26th, 2025 |
|-------------|----------------|

Days on Market 52

Zoning Zone 27

DATA IS DEEMED RELIABLE BUT IS NOT GUARANTEED ACCURATE BY THE REALTORS® ASSOCIATION OF EDMONTON. COPYRIGHT 2025 BY THE REALTORS® ASSOCIATION OF EDMONTON. ALL RIGHTS RESERVED. Trademarks are owned or controlled by the Canadian Real Estate Association (CREA) and identify real estate professionals who are members of CREA (REALTOR®, REALTORS®) and/or the quality of services they provide (MLS®, Multiple Listing Service®)

Listing information last updated on July 17th, 2025 at 7:02pm MDT