

\$429,900 - 10420 32 Avenue, Edmonton

MLS® #E4438045

\$429,900

4 Bedroom, 2.00 Bathroom, 2,394 sqft
Single Family on 0.00 Acres

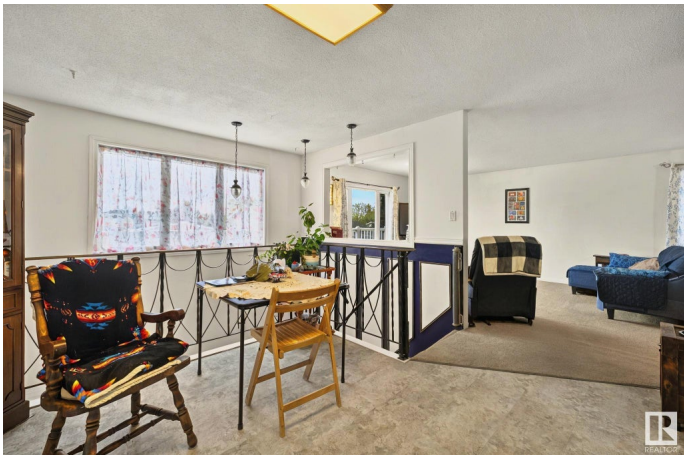
Steinhauer, Edmonton, AB

Welcome to this unique single-family home offering nearly 2,400 sq ft of versatile living space in one of Edmonton’s most established communities. With 4 spacious bedrooms and 2 full bathrooms, this home combines comfort, character, and functionality. Step into the beautifully updated kitchen, perfect for family meals or entertaining guests, and enjoy the benefits of air conditioning on hot summer days. The home also features a single attached garage, a large, private yard ideal for kids, pets, or backyard gatherings—and even your own sauna and large sunroom for the ultimate in-home retreat. Whether you’re looking to upsize, personalize, or just settle into a charming neighborhood with all the amenities nearby, this one-of-a-kind property is a standout opportunity. Don’t miss your chance to own something truly special!

Built in 1977

Essential Information

MLS® #	E4438045
Price	\$429,900
Bedrooms	4
Bathrooms	2.00
Full Baths	2
Square Footage	2,394



Acres	0.00
Year Built	1977
Type	Single Family
Sub-Type	Detached Single Family
Style	2 Storey
Status	Active

Community Information

Address	10420 32 Avenue
Area	Edmonton
Subdivision	Steinhauer
City	Edmonton
County	ALBERTA
Province	AB
Postal Code	T6J 4E8

Amenities

Amenities	Air Conditioner, Sauna; Swirlpool; Steam, Sunroom
Parking	Single Garage Attached

Interior

Appliances	Air Conditioning-Central, Dishwasher-Built-In, Dryer, Freezer, Oven-Microwave, Refrigerator, Storage Shed, Stove-Electric, Washer
Heating	Forced Air-1, Natural Gas
Stories	2
Has Basement	Yes
Basement	None, No Basement

Exterior

Exterior	Wood, Brick, Stucco
Exterior Features	Fenced, Flat Site, Fruit Trees/Shrubs, Landscaped, Schools, Shopping Nearby
Roof	Asphalt Shingles
Construction	Wood, Brick, Stucco
Foundation	Concrete Perimeter

Additional Information

Date Listed	May 23rd, 2025
Days on Market	30

Zoning

Zone 16

DATA IS DEEMED RELIABLE BUT IS NOT GUARANTEED ACCURATE BY THE REALTORS® ASSOCIATION OF EDMONTON. COPYRIGHT 2025 BY THE REALTORS® ASSOCIATION OF EDMONTON. ALL RIGHTS RESERVED. Trademarks are owned or controlled by the Canadian Real Estate Association (CREA) and identify real estate professionals who are members of CREA (REALTOR®, REALTORS®) and/or the quality of services they provide (MLS®, Multiple Listing Service®)

Listing information last updated on June 21st, 2025 at 11:32pm MDT