

Courtesy Of Jeff D Jackson Of Bode

\$629,900 - 744 Mattson Drive, Edmonton

MLS® #E4437531

\$629,900

4 Bedroom, 3.00 Bathroom, 2,014 sqft

Single Family on 0.00 Acres

Mattson, Edmonton, AB

A 1944 sq ft Aurora will WOW you with its luxurious upgrades and a functional layout. It comes with a main floor bedroom and full bathroom upgraded with a walk-in shower. Two-toned central kitchen has everything you need! Smart Black Stainless steel Samsung appliances: built-in microwave, electric stove, French-door fridge, built-in dishwasher and an integrated hood fan. The island comes with waterfall quartz on both sides and a farmer's granite sink! Pantry is conveniently located in the corner and comes with melamine shelving. A spacious living room is at the back of the house; it is big enough to fit any sectional couch. Enjoy the movie nights with a beautiful 60" linear electric fireplace. A gorgeous custom staircase will lead you all the way up to the bonus room. To your right you will find yourself in a primary bedroom that comes with a fully upgraded ensuite with 2 undermount sinks, custom towel shelving and a tiled walk-in shower with built-in niches and rain showerhead.

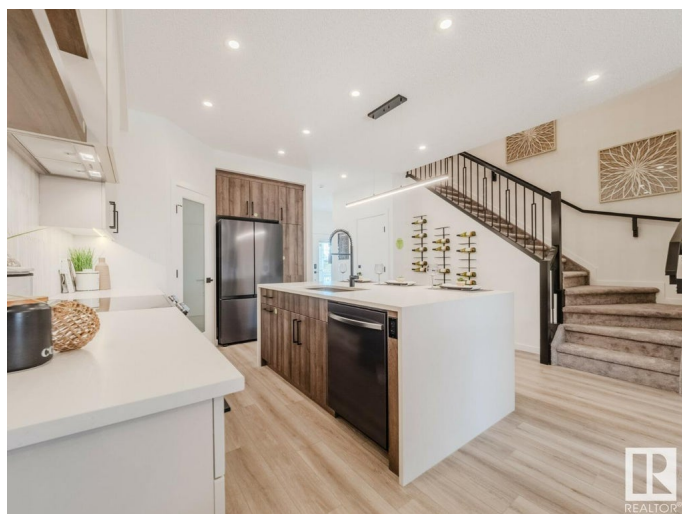
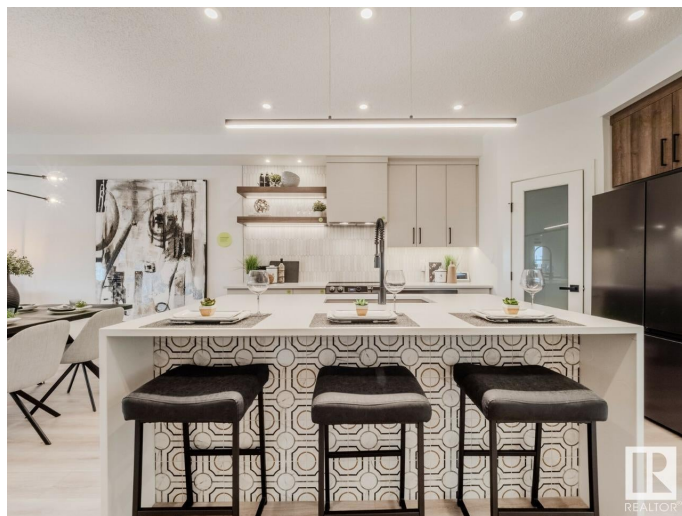
Built in 2024

Essential Information

MLS® # E4437531

Price \$629,900

Bedrooms 4



Bathrooms	3.00
Full Baths	3
Square Footage	2,014
Acres	0.00
Year Built	2024
Type	Single Family
Sub-Type	Detached Single Family
Style	2 Storey
Status	Active

Community Information

Address	744 Mattson Drive
Area	Edmonton
Subdivision	Mattson
City	Edmonton
County	ALBERTA
Province	AB
Postal Code	T6X 1A3

Amenities

Amenities	Closet Organizers, No Animal Home, No Smoking Home
Parking Spaces	2
Parking	Double Garage Detached

Interior

Interior Features	ensuite bathroom
Appliances	Dishwasher-Built-In, Dryer, Garage Control, Hood Fan, Oven-Microwave, Refrigerator, Stove-Electric, Washer, Window Coverings
Heating	Forced Air-1, Natural Gas
Fireplace	Yes
Fireplaces	Insert
Stories	2
Has Basement	Yes
Basement	Full, Unfinished

Exterior

Exterior	Wood, Vinyl
Exterior Features	Park/Reserve, Schools, Shopping Nearby

Roof	Asphalt Shingles
Construction	Wood, Vinyl
Foundation	Concrete Perimeter

Additional Information

Date Listed	May 21st, 2025
Days on Market	1
Zoning	Zone 53

DATA IS DEEMED RELIABLE BUT IS NOT GUARANTEED ACCURATE BY THE REALTORS® ASSOCIATION OF EDMONTON. COPYRIGHT 2025 BY THE REALTORS® ASSOCIATION OF EDMONTON. ALL RIGHTS RESERVED.Trademarks are owned or controlled by the Canadian Real Estate Association (CREA) and identify real estate professionals who are members of CREA (REALTOR®, REALTORS®) and/or the quality of services they provide (MLS®, Multiple Listing Service®)

Listing information last updated on May 22nd, 2025 at 5:17pm MDT