

Courtesy Of Michael A Pavone Of RE/MAX Elite

## \$524,999 - 801 11969 Jasper Avenue, Edmonton

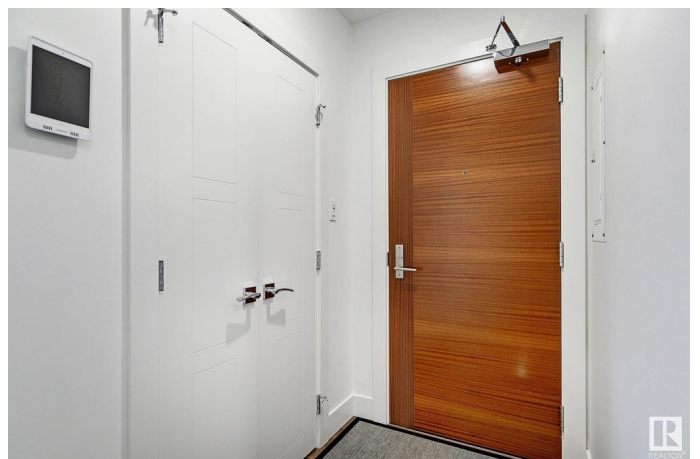
MLS® #E4437390

**\$524,999**

2 Bedroom, 2.00 Bathroom, 1,254 sqft  
Condo / Townhouse on 0.00 Acres

W&#228;hkw&#228;nt&#228;win, Edmonton, AB

Welcome to the prestigious Pearl Tower! This FRESHLY PAINTED 2 bed 2 bath condo features NEW WHITE OAK wide plank HARDWOOD, GRANITE COUNTERTOPS, 2 Balconies, and views of Jasper Ave and the River Valley! Floor-to-ceiling windows allow tons of natural light throughout the OPEN CONCEPT layout! The bright white kitchen features soft close cabinetry, Bosch/Jenn-Air Appliances, LARGE ISLAND, under cabinet lighting, and WALK IN PANTRY. The living room has an entrance to the FIRST BALCONY and a stunning fireplace with a backsplash surround! The primary suite features a PRIVATE BALCONY, a walk-through closet, and a beautiful ensuite complete with a spa-like tiled walk-in shower with FULL STEAM AND JETS! A second bedroom, 4 piece bath, and an INSUITE LAUNDRY finish off this unit. Complete with 2 UNDERGROUND STALLS, a storage cage in the parkade, CAR WASH, a Large social/amenity room with outdoor patio space, 2 EXERCISE ROOMS, and a 24-hr Concierge. This is truly the life of Luxury Downtown!



Built in 2015

### Essential Information

MLS® #	E4437390
Price	\$524,999

Bedrooms	2
Bathrooms	2.00
Full Baths	2
Square Footage	1,254
Acres	0.00
Year Built	2015
Type	Condo / Townhouse
Sub-Type	Apartment High Rise
Style	Single Level Apartment
Status	Active

### Community Information

Address	801 11969 Jasper Avenue
Area	Edmonton
Subdivision	WÃ©hkwÃ©ntÃ©win
City	Edmonton
County	ALBERTA
Province	AB
Postal Code	T5K 0P1

### Amenities

Amenities	Air Conditioner, Carbon Monoxide Detectors, Closet Organizers, Deck, Detectors Smoke, Exercise Room, Intercom, No Smoking Home, Parking-Extra, Parking-Visitor, Party Room, Patio, Recreation Room/Centre, Secured Parking, Security Door, Security Personnel, Social Rooms, Concierge Service, Storage Cage, Rooftop Deck/Patio
Parking Spaces	2
Parking	Parkade, Underground

### Interior

Interior Features	ensuite bathroom
Appliances	Air Conditioning-Central, Dishwasher-Built-In, Dryer, Garage Opener, Garburator, Hood Fan, Oven-Built-In, Oven-Microwave, Refrigerator, Stove-Countertop Electric, Washer, Window Coverings
Heating	Heat Pump, Natural Gas
# of Stories	36
Stories	1
Has Basement	Yes
Basement	None, No Basement

**Exterior**

Exterior	Concrete, Metal, See Remarks
Exterior Features	Golf Nearby, Park/Reserve, Picnic Area, Playground Nearby, Public Transportation, River Valley View, Shopping Nearby, View City, View Downtown
Roof	EPDM Membrane
Construction	Concrete, Metal, See Remarks
Foundation	Concrete Perimeter

**Additional Information**

Date Listed	May 20th, 2025
Days on Market	16
Zoning	Zone 12
Condo Fee	\$1,296

DATA IS DEEMED RELIABLE BUT IS NOT GUARANTEED ACCURATE BY THE REALTORS® ASSOCIATION OF EDMONTON. COPYRIGHT 2025 BY THE REALTORS® ASSOCIATION OF EDMONTON. ALL RIGHTS RESERVED.Trademarks are owned or controlled by the Canadian Real Estate Association (CREA) and identify real estate professionals who are members of CREA (REALTOR®, REALTORS®) and/or the quality of services they provide (MLS®, Multiple Listing Service®)

Listing information last updated on June 5th, 2025 at 4:47am MDT