

## **\$499,000 - 10249 158 Street, Edmonton**

MLS® #E4436983

**\$499,000**

4 Bedroom, 1.50 Bathroom, 1,049 sqft  
Single Family on 0.00 Acres

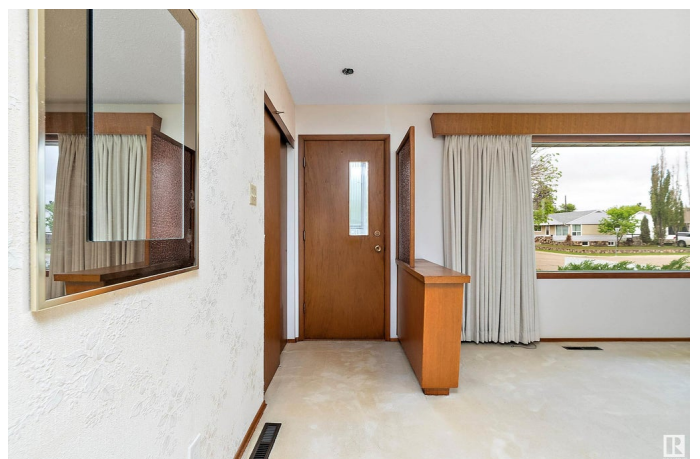
Britannia Youngstown, Edmonton, AB

Welcome to the BEAUTIFUL ORIGINAL OWNER HOME in great condition. FULLY DEVELOPED 1048 sq. ft. 4-bedroom 2-bathroom BUNGALOW with OVERSIZED DOUBLE GARAGE & a large 50'x150' CORNER LOT. Formal style main floor featuring a LIVING ROOM with picture window offering tons of NATURAL LIGHT & a generous sized dining room. U-SHAPED kitchen with white appliances & plenty of counterspace. 3 bedrooms plus a 4 pc. bathroom on the main floor. A BACK DOOR provides access to the yard and SEPERATE ENTRANCE to the basement completes the main floor. FINISHED BASEMENT featuring a family room, recreation room, a 4th bedroom, 2 pc. bathroom plus a laundry/utility room. LOW MAINTENANCE LANDSCAPED front and back yard, white fencing, easement on the side, concrete patio, MATURE TRRES & a 21.4'x23.5' detached garage. LOTS OF POTENTIAL to live in or build a suite/multi-unit. Well-maintained home in a great location close to DOWNTOWN EDMONTON all the amenities the area has to offer.

Built in 1962

### **Essential Information**

MLS® # E4436983



Price	\$499,000
Bedrooms	4
Bathrooms	1.50
Full Baths	1
Half Baths	1
Square Footage	1,049
Acres	0.00
Year Built	1962
Type	Single Family
Sub-Type	Detached Single Family
Style	Bungalow
Status	Active

### Community Information

Address	10249 158 Street
Area	Edmonton
Subdivision	Britannia Youngstown
City	Edmonton
County	ALBERTA
Province	AB
Postal Code	T5P 2Y1

### Amenities

Amenities	Patio
Parking Spaces	4
Parking	Double Garage Detached, Over Sized, Rear Drive Access

### Interior

Appliances	Dryer, Fan-Ceiling, Freezer, Garage Control, Garage Opener, Hood Fan, Refrigerator, Stove-Electric, Washer
Heating	Forced Air-1, Natural Gas
Stories	2
Has Basement	Yes
Basement	Full, Finished

### Exterior

Exterior	Wood, Vinyl
Exterior Features	Corner Lot, Fenced, Landscaped, Low Maintenance Landscape, Playground Nearby, Public Transportation, Schools, Shopping Nearby

Lot Description	15.2x45.7
Roof	Asphalt Shingles
Construction	Wood, Vinyl
Foundation	Concrete Perimeter

### **School Information**

Elementary	Brightview School
Middle	Britannia School
High	Ross Sheppard School

### **Additional Information**

Date Listed	May 15th, 2025
Days on Market	6
Zoning	Zone 21

DATA IS DEEMED RELIABLE BUT IS NOT GUARANTEED ACCURATE BY THE REALTORS® ASSOCIATION OF EDMONTON. COPYRIGHT 2025 BY THE REALTORS® ASSOCIATION OF EDMONTON. ALL RIGHTS RESERVED. Trademarks are owned or controlled by the Canadian Real Estate Association (CREA) and identify real estate professionals who are members of CREA (REALTOR®, REALTORS®) and/or the quality of services they provide (MLS®, Multiple Listing Service®)

Listing information last updated on May 21st, 2025 at 2:02pm MDT