

## **\$574,800 - 10329 146 Street, Edmonton**

MLS® #E4436753

**\$574,800**

5 Bedroom, 3.00 Bathroom, 1,434 sqft

Single Family on 0.00 Acres

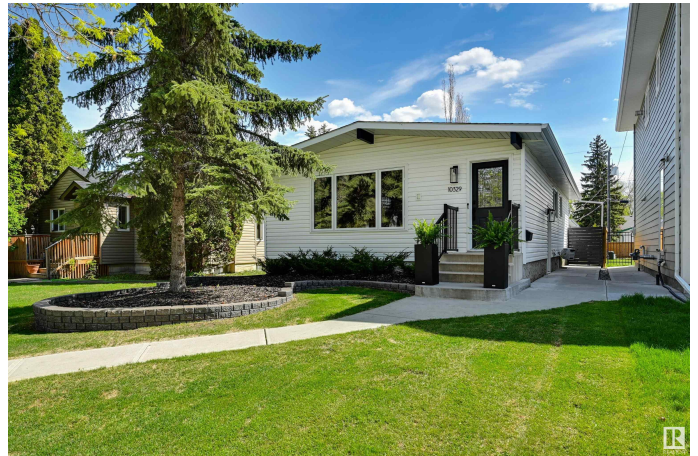
Grovenor, Edmonton, AB

Fully Renovated & Turn Key Bungalow in Grovenor! This executive level home with legal suite spans more than 1,430 sqft above grade. Situated on a quiet, tree-lined street, this property is a tranquil yet well-located sanctuary. The living room enjoys upgraded, oversized west-facing windows, blonde oak inspired flooring, a beautiful gas fireplace, and built-ins. Next is the spacious dining area, featuring elegant built-ins that add both style and functionality to the space. The space opens gracefully into the open concept kitchen featuring stainless steel appliances, quartz counters & tons of custom white cabinetry. Down the hall you will find a beautifully redone full bathroom, two well sized bedrooms, and a luxurious primary suite with built-in closet and spa-inspired ensuite! Downstairs: a full legal two bedroom suite with separate entrance. Well maintained yard with composite deck, green space & upgraded, heated double garage with epoxy flooring. A/C included! This is the one you have been waiting for!

Built in 1973

### **Essential Information**

MLS® #	E4436753
Price	\$574,800
Bedrooms	5



Bathrooms	3.00
Full Baths	3
Square Footage	1,434
Acres	0.00
Year Built	1973
Type	Single Family
Sub-Type	Detached Single Family
Style	Bungalow
Status	Active

### Community Information

Address	10329 146 Street
Area	Edmonton
Subdivision	Grovenor
City	Edmonton
County	ALBERTA
Province	AB
Postal Code	T5N 3A3

### Amenities

Amenities	See Remarks
Parking	Double Garage Detached

### Interior

Interior Features	ensuite bathroom
Appliances	Air Conditioning-Central, Stove-Electric, Stove-Gas, Dryer-Two, Refrigerators-Two, Washers-Two, Dishwasher-Two, Microwave Hood Fan-Two
Heating	Forced Air-1, Natural Gas
Stories	2
Has Suite	Yes
Has Basement	Yes
Basement	Full, Finished

### Exterior

Exterior	Wood, Vinyl
Exterior Features	Back Lane, Landscaped, Playground Nearby, Public Transportation, Schools, Shopping Nearby, Treed Lot
Roof	Asphalt Shingles

Construction	Wood, Vinyl
Foundation	Concrete Perimeter

**Additional Information**

Date Listed	May 15th, 2025
Days on Market	5
Zoning	Zone 21

DATA IS DEEMED RELIABLE BUT IS NOT GUARANTEED ACCURATE BY THE REALTORS® ASSOCIATION OF EDMONTON. COPYRIGHT 2025 BY THE REALTORS® ASSOCIATION OF EDMONTON. ALL RIGHTS RESERVED.Trademarks are owned or controlled by the Canadian Real Estate Association (CREA) and identify real estate professionals who are members of CREA (REALTOR®, REALTORS®) and/or the quality of services they provide (MLS®, Multiple Listing Service®)

Listing information last updated on May 20th, 2025 at 4:32pm MDT