

\$499,000 - 428 Crystal Creek Link, Leduc

MLS® #E4436382

\$499,000

4 Bedroom, 3.00 Bathroom, 1,657 sqft
Single Family on 0.00 Acres

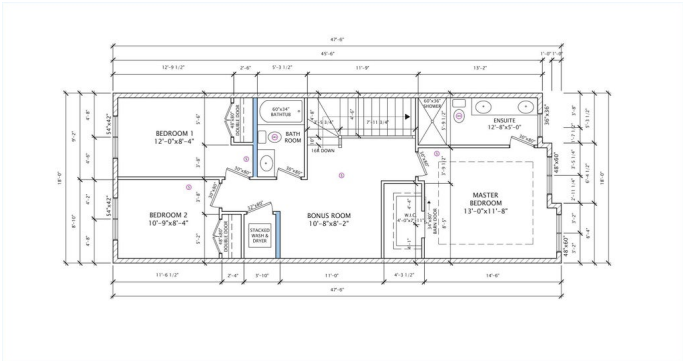
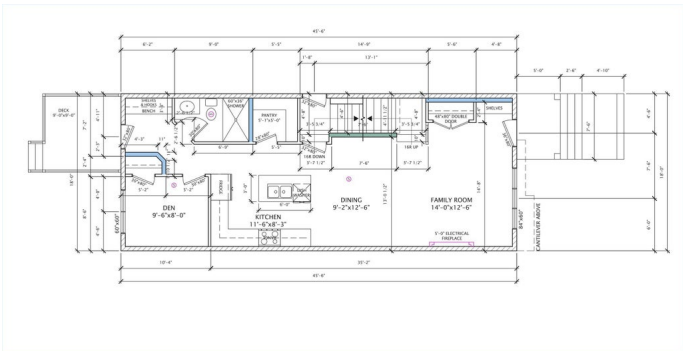
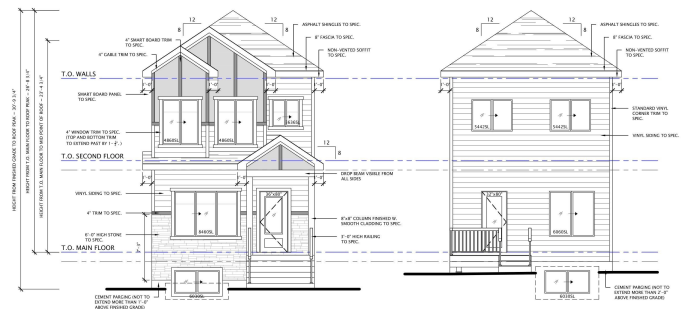
Crystal Creek_LEDU, Leduc, AB

Discover this beautifully designed 1657 sqft home in one of Leduc’s most sought-after Community, just a 2-minute walk to school and close to all major amenities. Perfect for families, this home features a full bedroom and bathroom on the main floor—ideal for guests or multi-generational living. The open-concept layout includes a modern L-shaped kitchen, spacious living and dining areas, and 9 ft ceilings on all levels, enhancing the bright and airy feel. Upstairs, you’ll find a cozy bonus room, perfect for family movie nights or a home office. The second floor also boasts three generously sized bedrooms, including a luxurious master with a private ensuite. Enjoy outdoor living with a built-in deck, and park with ease in the detached double garage. Future potential abounds with a side entry to the basement, featuring two windows and ready for development. Whether you’re a growing family or an investor, this home offers exceptional value, style, and flexibility in a prime location. Don’t miss your chance

Built in 2025

Essential Information

MLS® #	E4436382
Price	\$499,000
Bedrooms	4



Bathrooms	3.00
Full Baths	3
Square Footage	1,657
Acres	0.00
Year Built	2025
Type	Single Family
Sub-Type	Detached Single Family
Style	2 Storey
Status	Active

Community Information

Address	428 Crystal Creek Link
Area	Leduc
Subdivision	Crystal Creek_LEDU
City	Leduc
County	ALBERTA
Province	AB
Postal Code	T9E 1N3

Amenities

Amenities	Ceiling 9 ft.
Parking	Double Garage Detached

Interior

Interior Features	ensuite bathroom
Appliances	Appliances Negotiable
Heating	Forced Air-2, Natural Gas
Fireplace	Yes
Fireplaces	Remote Control, Wall Mount
Stories	2
Has Basement	Yes
Basement	Full, See Remarks

Exterior

Exterior	Wood, Vinyl
Exterior Features	Airport Nearby, Park/Reserve, Schools, Stream/Pond
Roof	Asphalt Shingles
Construction	Wood, Vinyl
Foundation	Concrete Perimeter

School Information

Middle Ohpaho Seconday School

Additional Information

Date Listed May 14th, 2025

Days on Market 4

Zoning Zone 81

DATA IS DEEMED RELIABLE BUT IS NOT GUARANTEED ACCURATE BY THE REALTORS® ASSOCIATION OF EDMONTON. COPYRIGHT 2025 BY THE REALTORS® ASSOCIATION OF EDMONTON. ALL RIGHTS RESERVED.Trademarks are owned or controlled by the Canadian Real Estate Association (CREA) and identify real estate professionals who are members of CREA (REALTOR®, REALTORS®) and/or the quality of services they provide (MLS®, Multiple Listing Service®)

Listing information last updated on May 18th, 2025 at 3:47pm MDT