

\$550,000 - 7720 77 Avenue, Edmonton

MLS® #E4435790

\$550,000

4 Bedroom, 2.00 Bathroom, 1,220 sqft

Single Family on 0.00 Acres

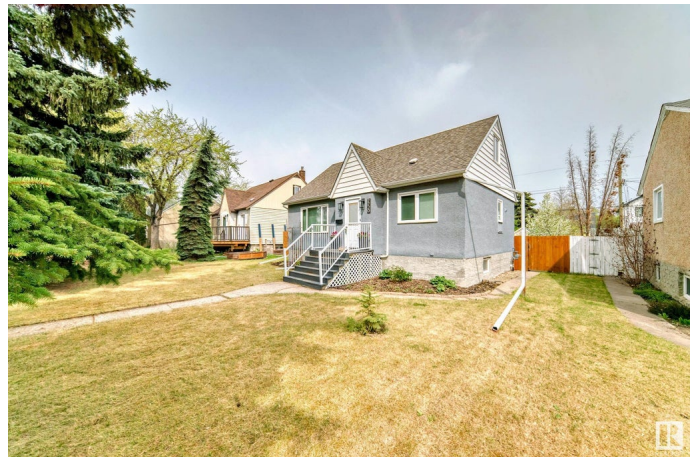
King Edward Park, Edmonton, AB

Welcome to this beautifully updated 1.5-storey gem in sought-after King Edward Park! Thoughtfully maintained and full of charm, this home features an open main floor with a renovated kitchen overlooking the backyard, a spacious dining area, cozy living room, main-floor bedroom, and stylish 4-piece bath. Upstairs offers two bright bedrooms, while the fully finished basement includes a family room, 4th bedroom, 3-piece bath, and generous laundry/storage space. Upgrades include triple-pane windows, weeping tile, sump pump, and a heated double garage (2010) with its own sub-panel. Enjoy the large, landscaped yard with fruit trees and perennials—perfect for entertaining or relaxing. Ideally located near parks, schools, Mill Creek Ravine, and just minutes from Whyte Ave and downtown. A perfect blend of comfort, function, and location—this home is a must-see!

Built in 1952

Essential Information

MLS® #	E4435790
Price	\$550,000
Bedrooms	4
Bathrooms	2.00
Full Baths	2
Square Footage	1,220



Acres	0.00
Year Built	1952
Type	Single Family
Sub-Type	Detached Single Family
Style	1 and Half Storey
Status	Active

Community Information

Address	7720 77 Avenue
Area	Edmonton
Subdivision	King Edward Park
City	Edmonton
County	ALBERTA
Province	AB
Postal Code	T6C 0K7

Amenities

Amenities	Vinyl Windows, Workshop
Parking Spaces	4
Parking	Double Garage Detached

Interior

Appliances	Dishwasher-Built-In, Dryer, Garage Control, Garage Opener, Microwave Hood Fan, Refrigerator, Stove-Electric, Washer, Window Coverings
Heating	Forced Air-1, Natural Gas
Stories	3
Has Basement	Yes
Basement	Full, Finished

Exterior

Exterior	Wood, Stucco, Vinyl
Exterior Features	Back Lane, Fenced, Fruit Trees/Shrubs, Playground Nearby, Public Transportation, Schools, Shopping Nearby
Roof	Asphalt Shingles
Construction	Wood, Stucco, Vinyl
Foundation	Concrete Perimeter

Additional Information

Date Listed	May 10th, 2025
-------------	----------------

Days on Market 14

Zoning Zone 17

DATA IS DEEMED RELIABLE BUT IS NOT GUARANTEED ACCURATE BY THE REALTORS® ASSOCIATION OF EDMONTON. COPYRIGHT 2025 BY THE REALTORS® ASSOCIATION OF EDMONTON. ALL RIGHTS RESERVED. Trademarks are owned or controlled by the Canadian Real Estate Association (CREA) and identify real estate professionals who are members of CREA (REALTOR®, REALTORS®) and/or the quality of services they provide (MLS®, Multiple Listing Service®)

Listing information last updated on May 24th, 2025 at 4:02pm MDT