

\$531,999 - 12416 136 Avenue, Edmonton

MLS® #E4433449

\$531,999

5 Bedroom, 2.00 Bathroom, 1,047 sqft

Single Family on 0.00 Acres

Kensington, Edmonton, AB

Get Inspired in Kensington! This stunning fully renovated bungalow offers 4 bedrooms, den, 2 full baths, and 1,056 sq. ft. of beautifully updated living space. Nestled in a quiet, family-friendly neighborhood, this home boasts impressive curb appeal and a bright open-concept layout filled with natural light. Enjoy the modern kitchen with stylish finishes and a cozy dining area. The main floor features 3 spacious bedrooms and a renovated 4-piece bath, while the fully finished basement offers a SEPARATE ENTRANCE, large family room, 4th bedroom, full bathroom, second kitchen, flex area, and generous storage/laundry space, ideal for extended family or suite potential! The huge backyard is fully landscaped and fenced with a large deck, perfect for outdoor entertaining. A single detached insulated garage adds extra convenience. Located close to schools, shopping, transit, and recreational facilities, this home is truly move-in ready.

Built in 1958

Essential Information

MLS® #	E4433449
Price	\$531,999
Bedrooms	5
Bathrooms	2.00



Full Baths	2
Square Footage	1,047
Acres	0.00
Year Built	1958
Type	Single Family
Sub-Type	Detached Single Family
Style	Bungalow
Status	Active

Community Information

Address	12416 136 Avenue
Area	Edmonton
Subdivision	Kensington
City	Edmonton
County	ALBERTA
Province	AB
Postal Code	T5L 4A8

Amenities

Amenities	Off Street Parking, On Street Parking, Deck, Detectors Smoke, Fire Pit
Parking	Single Garage Detached

Interior

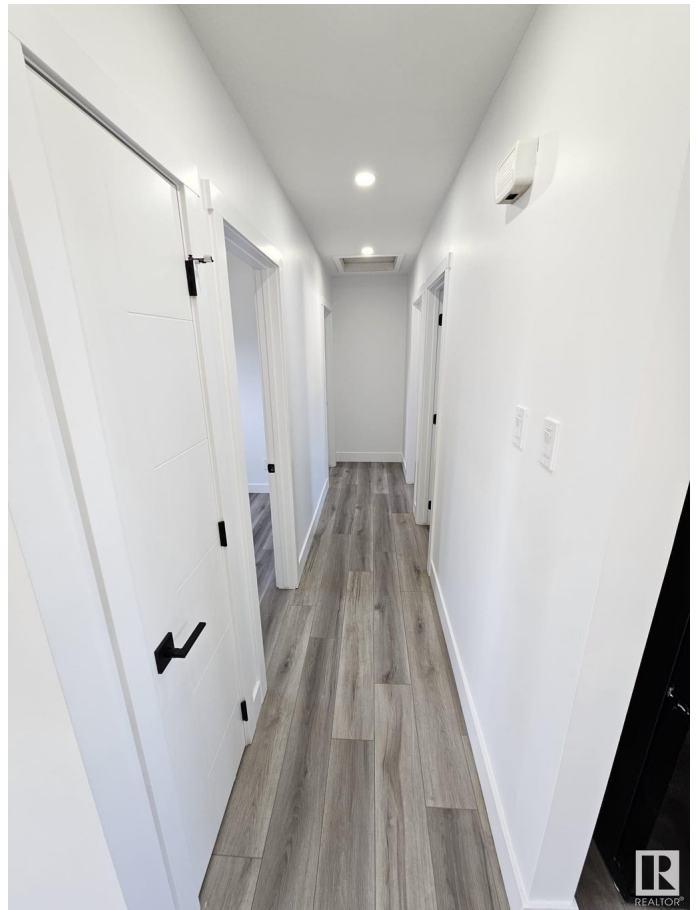
Appliances	Dishwasher-Built-In, Dryer, Microwave Hood Fan, Washer, Refrigerators-Two, Stoves-Two
Heating	Forced Air-1, Natural Gas
Stories	2
Has Suite	Yes
Has Basement	Yes
Basement	Full, Finished

Exterior

Exterior	Wood, Vinyl
Exterior Features	Back Lane, Fenced, Landscaped, Playground Nearby, Public Transportation, Schools, Shopping Nearby
Roof	Asphalt Shingles
Construction	Wood, Vinyl
Foundation	Concrete Perimeter

Additional Information

Date Listed	April 30th, 2025
Days on Market	27
Zoning	Zone 01



DATA IS DEEMED RELIABLE BUT IS NOT GUARANTEED ACCURATE BY THE REALTORS® ASSOCIATION OF EDMONTON. COPYRIGHT 2025 BY THE REALTORS® ASSOCIATION OF EDMONTON. ALL RIGHTS RESERVED. Trademarks are owned or controlled by the Canadian Real Estate Association (CREA) and identify real estate professionals who are members of CREA (REALTOR®, REALTORS®) and/or the quality of services they provide (MLS®, Multiple Listing Service®)

Listing information last updated on May 27th, 2025 at 11:02am MDT