

\$558,900 - 4015 28a Street, Edmonton

MLS® #E4432442

\$558,900

4 Bedroom, 3.50 Bathroom, 1,915 sqft

Single Family on 0.00 Acres

Larkspur, Edmonton, AB

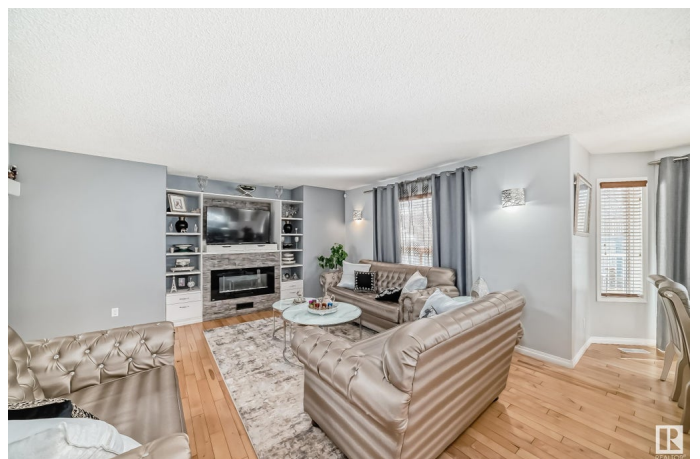
THE HOME YOU HAVE BEEN WAITING FOR! In a quiet location, this OUTSTANDING 3+1 bed home w/ a Professionally Finished basement provides over 2,500 sq.ft. of developed living space! The bright, open plan features a gourmet kitchen w/ plenty of cabinets, a functional island, corner windows, a tiled splash & upgraded S.S appliances. There is a LARGE family room w/ fireplace, Hardwood, a spacious Front Foyer, & huge windows in the eating area that flood the home w/ natural light. The upper level features wide hallways, HARDWOOD, 3 generous bedrooms, a bright bonus space & a RENOVATED Spa-like Luxury Ensuite. The NEWER finished basement continues to impress w/ its SPACIOUS 4th bedroom, 3 piece bathroom, and a BIG Rec. Room & bar/kitchen area. The Large pie-shaped yard includes mature landscaping, in-ground sprinklers, a storage shed & a GREAT DECK! W/ Cental A/C. & a HEATED Garage, plus a new roof. Was running as a day home prior and would be a perfect business.

Built in 1999

Essential Information

MLS® # E4432442

Price \$558,900



Bedrooms	4
Bathrooms	3.50
Full Baths	3
Half Baths	1
Square Footage	1,915
Acres	0.00
Year Built	1999
Type	Single Family
Sub-Type	Detached Single Family
Style	2 Storey
Status	Active

Community Information

Address	4015 28a Street
Area	Edmonton
Subdivision	Larkspur
City	Edmonton
County	ALBERTA
Province	AB
Postal Code	T6T 1L8

Amenities

Amenities	Air Conditioner, Deck, Exterior Walls- 2"x6"
Parking	Double Garage Attached, Front Drive Access

Interior

Interior Features	ensuite bathroom
Appliances	Dishwasher-Built-In, Dryer, Garage Control, Garage Opener, Microwave Hood Fan, Refrigerator, Stove-Electric, Washer, Window Coverings, Garage Heater
Heating	Forced Air-1, Natural Gas
Fireplace	Yes
Fireplaces	Glass Door
Stories	3
Has Basement	Yes
Basement	Full, Finished

Exterior

Exterior	Wood, Brick, Vinyl
----------	--------------------

Exterior Features	Fenced, Flat Site, Fruit Trees/Shrubs, Golf Nearby, Landscaped, No Back Lane, Public Transportation, Schools, Shopping Nearby
Roof	Asphalt Shingles
Construction	Wood, Brick, Vinyl
Foundation	Concrete Perimeter

School Information

Elementary	Velma E. Baker School
Middle	Thelma Chalifoux School
High	Elder Dr. Francis Whiskeyj

Additional Information

Date Listed	April 24th, 2025
Days on Market	38
Zoning	Zone 30

DATA IS DEEMED RELIABLE BUT IS NOT GUARANTEED ACCURATE BY THE REALTORS® ASSOCIATION OF EDMONTON. COPYRIGHT 2025 BY THE REALTORS® ASSOCIATION OF EDMONTON. ALL RIGHTS RESERVED. Trademarks are owned or controlled by the Canadian Real Estate Association (CREA) and identify real estate professionals who are members of CREA (REALTOR®, REALTORS®) and/or the quality of services they provide (MLS®, Multiple Listing Service®)

Listing information last updated on June 1st, 2025 at 1:32pm MDT