

# \$539,900 - 4705 Hawthorn Lane, Edmonton

MLS® #E4430949

**\$539,900**

3 Bedroom, 2.50 Bathroom, 1,739 sqft

Single Family on 0.00 Acres

The Orchards At Ellerslie, Edmonton, AB

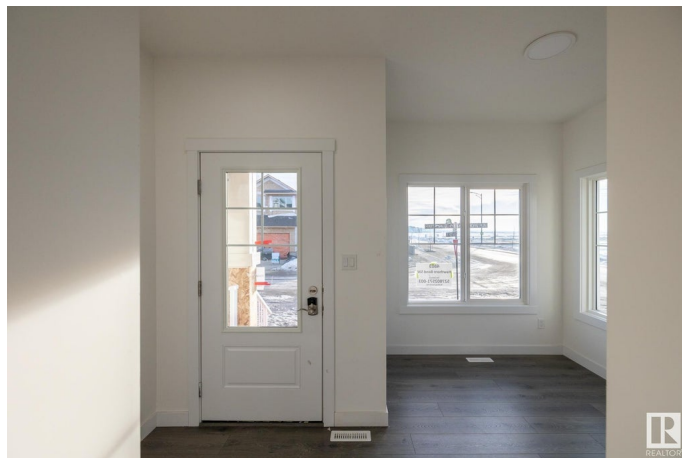
Located in South Ellerslie, natural beauty surrounds Orchards. You and your family can embrace the beautiful green spaces with lots of room to play, relax, and explore the outdoors. The Willow from Akash Homes welcomes you with a spacious foyer leading into an open-concept main floor. This well-designed space features 9' ceilings and a den on the main floor, laminate flooring, and a chef's kitchen with quartz counters, a closet pantry, and soft-close cabinets. Conveniently access the attached garage directly from the main floor. Upstairs, unwind in the primary suite designed for two, along with two more bedrooms, a bonus room, and second-floor laundry for added ease.

**\*\*PLEASE NOTE\*\* UNDER CONSTRUCTION! PICTURES ARE OF SIMILAR HOME; ACTUAL HOME, PLANS, FIXTURES, AND FINISHES MAY VARY AND ARE SUBJECT TO AVAILABILITY/CHANGES WITHOUT NOTICE**

Built in 2024

## Essential Information

|           |           |
|-----------|-----------|
| MLS® #    | E4430949  |
| Price     | \$539,900 |
| Bedrooms  | 3         |
| Bathrooms | 2.50      |



|                |                        |
|----------------|------------------------|
| Full Baths     | 2                      |
| Half Baths     | 1                      |
| Square Footage | 1,739                  |
| Acres          | 0.00                   |
| Year Built     | 2024                   |
| Type           | Single Family          |
| Sub-Type       | Detached Single Family |
| Style          | 2 Storey               |
| Status         | Active                 |

### **Community Information**

|             |                           |
|-------------|---------------------------|
| Address     | 4705 Hawthorn Lane        |
| Area        | Edmonton                  |
| Subdivision | The Orchards At Ellerslie |
| City        | Edmonton                  |
| County      | ALBERTA                   |
| Province    | AB                        |
| Postal Code | T6X 3C5                   |

### **Amenities**

|           |                        |
|-----------|------------------------|
| Amenities | Deck                   |
| Parking   | Double Garage Attached |

### **Interior**

|                   |                           |
|-------------------|---------------------------|
| Interior Features | ensuite bathroom          |
| Appliances        | See Remarks               |
| Heating           | Forced Air-1, Natural Gas |
| Fireplace         | Yes                       |
| Fireplaces        | Glass Door                |
| Stories           | 2                         |
| Has Basement      | Yes                       |
| Basement          | Full, Unfinished          |

### **Exterior**

|                   |                            |
|-------------------|----------------------------|
| Exterior          | Wood, Vinyl                |
| Exterior Features | Not Fenced, Not Landscaped |
| Roof              | Asphalt Shingles           |
| Construction      | Wood, Vinyl                |
| Foundation        | Concrete Perimeter         |

## Additional Information

|                |                  |
|----------------|------------------|
| Date Listed    | April 15th, 2025 |
| Days on Market | 7                |
| Zoning         | Zone 53          |
| HOA Fees       | 400              |
| HOA Fees Freq. | Annually         |

DATA IS DEEMED RELIABLE BUT IS NOT GUARANTEED ACCURATE BY THE REALTORS® ASSOCIATION OF EDMONTON. COPYRIGHT 2025 BY THE REALTORS® ASSOCIATION OF EDMONTON. ALL RIGHTS RESERVED. Trademarks are owned or controlled by the Canadian Real Estate Association (CREA) and identify real estate professionals who are members of CREA (REALTOR®, REALTORS®) and/or the quality of services they provide (MLS®, Multiple Listing Service®)

Listing information last updated on April 22nd, 2025 at 3:17pm MDT