

# \$449,900 - 9932 178 Avenue, Edmonton

MLS® #E4430255

**\$449,900**

5 Bedroom, 3.00 Bathroom, 1,185 sqft

Single Family on 0.00 Acres

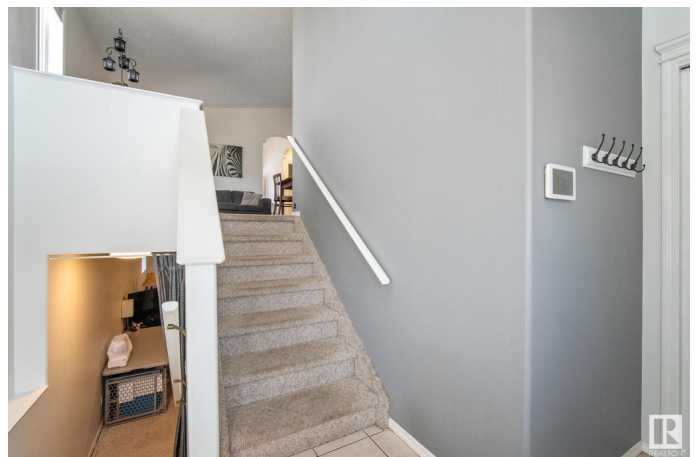
Elsinore, Edmonton, AB

Welcome to this beautiful bi-level home with 5-bedrooms & 3 full bathrooms, tucked into a quiet cul-de-sac in Elsinore AND BACKING A WALKING TRAILâ€”perfect for family living! Bright and airy throughout, this home features a spacious eat-in kitchen with access to a deck and private fully fenced yard. The living room offers big windows and plenty of natural light. The primary bedroom includes a private ensuite and His & Hers closets. Two more bedrooms and a 4-piece bath complete the main floor. The fully finished basement boasts a massive family room with gas fireplace, two additional bedrooms, a 4-piece bath, and a storage room. Enjoy the fenced backyardâ€”great for kids and pets! Steps to parks and the lake walk. Recent upgrades: roof (2022), furnace, Central A/C, hot water tank (2017), plus SS appliances, new light fixtures, low flush toilets, window coverings, and paint (2021). A wonderful family home in a fantastic community!

Built in 1997

## Essential Information

MLS® #	E4430255
Price	\$449,900
Bedrooms	5
Bathrooms	3.00



Full Baths	3
Square Footage	1,185
Acres	0.00
Year Built	1997
Type	Single Family
Sub-Type	Detached Single Family
Style	Bi-Level
Status	Active

### Community Information

Address	9932 178 Avenue
Area	Edmonton
Subdivision	Elsinore
City	Edmonton
County	ALBERTA
Province	AB
Postal Code	T5X 5X2

### Amenities

Amenities	Air Conditioner, Deck, Dog Run-Fenced In
Parking Spaces	4
Parking	Double Garage Attached

### Interior

Interior Features	ensuite bathroom
Appliances	Air Conditioning-Central, Dishwasher-Built-In, Dryer, Microwave Hood Fan, Refrigerator, Storage Shed, Stove-Electric, Vacuum System Attachments, Vacuum Systems, Washer, Window Coverings, TV Wall Mount
Heating	Forced Air-1, Natural Gas
Fireplace	Yes
Fireplaces	Glass Door
Stories	2
Has Basement	Yes
Basement	Full, Finished

### Exterior

Exterior	Wood, Vinyl
Exterior Features	Cul-De-Sac, Fenced, Flat Site, Landscaped, No Back Lane, No Through

Road, Park/Reserve, Private Setting, Public Transportation, Schools,  
Shopping Nearby, See Remarks

Roof	Asphalt Shingles
Construction	Wood, Vinyl
Foundation	Concrete Perimeter

### **Additional Information**

Date Listed	April 10th, 2025
Days on Market	10
Zoning	Zone 27

DATA IS DEEMED RELIABLE BUT IS NOT GUARANTEED ACCURATE BY THE REALTORS® ASSOCIATION OF EDMONTON. COPYRIGHT 2025 BY THE REALTORS® ASSOCIATION OF EDMONTON. ALL RIGHTS RESERVED. Trademarks are owned or controlled by the Canadian Real Estate Association (CREA) and identify real estate professionals who are members of CREA (REALTOR®, REALTORS®) and/or the quality of services they provide (MLS®, Multiple Listing Service®)

Listing information last updated on April 20th, 2025 at 6:47pm MDT