

Courtesy Of Jacquie C Smith Of 2% Realty Pro

\$450,000 - 2835 Chokecherry Place, Edmonton

MLS® #E4430244

\$450,000

4 Bedroom, 3.50 Bathroom, 1,340 sqft
Single Family on 0.00 Acres

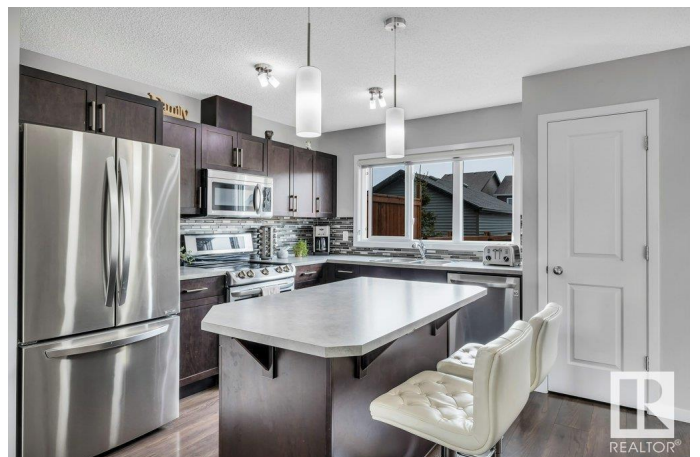
The Orchards At Ellerslie, Edmonton, AB

FULLY FINISHED! This beauty has EVERYTHING you want at a price you can actually afford! FULLY FINISHED w/4 bedrooms, 4 baths, an open concept main floor with sleek dark kitchen cabinets, stainless appliances, open to dining area & living room with vinyl plank flooring throughout, upper level offers 3 good sized bedrooms primary with walk in closet & 3 piece bath, 2 additional bedrooms share a full 4 piece bath, convenient 2nd level laundry completes this level, lower fully developed with awesome family room & bedroom with 3 piece ensuite! Nice attached back deck for sunny day BBQ's and a double detached garage! Orchards is family friendly with schools, parks, community league, skating rink and much more. Don't wait on this one.

Built in 2017

Essential Information

| | |
|----------------|-----------|
| MLS® # | E4430244 |
| Price | \$450,000 |
| Bedrooms | 4 |
| Bathrooms | 3.50 |
| Full Baths | 3 |
| Half Baths | 1 |
| Square Footage | 1,340 |
| Acres | 0.00 |



| | |
|------------|---------------|
| Year Built | 2017 |
| Type | Single Family |
| Sub-Type | Half Duplex |
| Style | 2 Storey |
| Status | Active |

Community Information

| | |
|-------------|---------------------------|
| Address | 2835 Chokecherry Place |
| Area | Edmonton |
| Subdivision | The Orchards At Ellerslie |
| City | Edmonton |
| County | ALBERTA |
| Province | AB |
| Postal Code | T6X 2J8 |

Amenities

| | |
|-----------|---|
| Amenities | Off Street Parking, On Street Parking, Deck, No Animal Home, No Smoking Home, Vinyl Windows |
| Parking | Double Garage Detached |

Interior

| | |
|-------------------|--|
| Interior Features | ensuite bathroom |
| Appliances | Dishwasher-Built-In, Dryer, Microwave Hood Fan, Refrigerator, Stove-Electric, Washer, Window Coverings |
| Heating | Forced Air-1, Natural Gas |
| Stories | 3 |
| Has Basement | Yes |
| Basement | Full, Finished |

Exterior

| | |
|-------------------|--|
| Exterior | Wood, Vinyl |
| Exterior Features | Back Lane, Fenced, Landscaped, Schools |
| Roof | Asphalt Shingles |
| Construction | Wood, Vinyl |
| Foundation | Concrete Perimeter |

School Information

| | |
|------------|-------------------|
| Elementary | Jan Reimer School |
| Middle | Jan Reimer School |

High

J Percy Page

Additional Information

Date Listed April 10th, 2025

Days on Market 15

Zoning Zone 53

HOA Fees 422

HOA Fees Freq. Annually

DATA IS DEEMED RELIABLE BUT IS NOT GUARANTEED ACCURATE BY THE REALTORS® ASSOCIATION OF EDMONTON. COPYRIGHT 2025 BY THE REALTORS® ASSOCIATION OF EDMONTON. ALL RIGHTS RESERVED. Trademarks are owned or controlled by the Canadian Real Estate Association (CREA) and identify real estate professionals who are members of CREA (REALTOR®, REALTORS®) and/or the quality of services they provide (MLS®, Multiple Listing Service®)

Listing information last updated on April 25th, 2025 at 5:32am MDT