

Courtesy Of Jaclyn Baillie Of Century 21 Masters

# **\$749,900 - 190 Redwing Wynd, St. Albert**

MLS® #E4429666

**\$749,900**

3 Bedroom, 2.50 Bathroom, 2,752 sqft

Single Family on 0.00 Acres

Riverside (St. Albert), St. Albert, AB

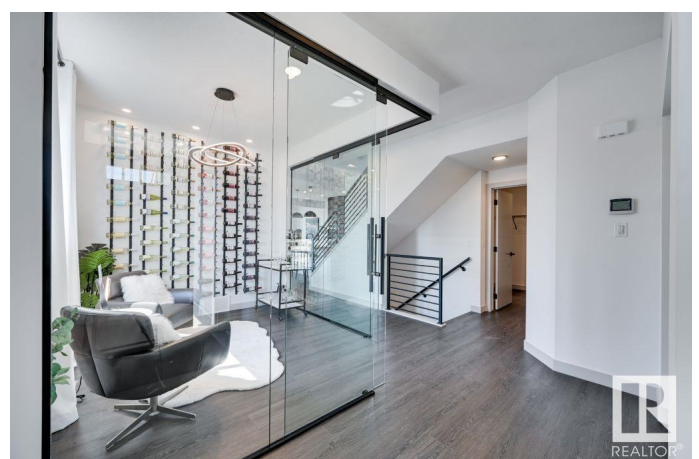
Elegant and modern showhome on a spacious landscaped corner lot. The main floor of this home welcomes you with a carefully designed open concept layout, which the rooms flow into each other for optimal entertaining and family functionality. Itâ€™s luxurious layout and finishes are sure to stun and make you feel at home! The kitchen is a chefâ€™s dream with a wall oven, electric stove top, chimney hood fan, under cabinet lighting, and a walk-thru butler pantry. A glass-enclosed den/flex room adds versatility. The living room features an electric F/P with tiled wall. Upstairs, discover 2 kids bedrooms, front bonus room for movie nights, and a personal haven â€“ the primary suite boasts an oversized WIC and the spacious ensuite with dual sinks, a tiled shower with bench, 10mm glass, and soaker tub for effortless mornings and winding down after a long workday. Additional highlights â€“ A/C, 9ft ceilings on main floor, double garage is 20â€™x22â€™/24â€™. Experience elevated design in this exceptional home and community!

Built in 2021

## **Essential Information**

MLS® # E4429666

Price \$749,900



Bedrooms	3
Bathrooms	2.50
Full Baths	2
Half Baths	1
Square Footage	2,752
Acres	0.00
Year Built	2021
Type	Single Family
Sub-Type	Detached Single Family
Style	2 Storey
Status	Active

### Community Information

Address	190 Redwing Wynd
Area	St. Albert
Subdivision	Riverside (St. Albert)
City	St. Albert
County	ALBERTA
Province	AB
Postal Code	T8N 7Z2

### Amenities

Amenities	Air Conditioner, Closet Organizers, Deck, Detectors Smoke, No Animal Home, No Smoking Home, Smart/Program. Thermostat, See Remarks
Parking	Double Garage Attached, Front Drive Access, Over Sized

### Interior

Interior Features	ensuite bathroom
Appliances	Dishwasher-Built-In, Oven-Microwave, Refrigerator, Stove-Electric
Heating	Forced Air-1, Natural Gas
Stories	2
Has Basement	Yes
Basement	Full, Unfinished

### Exterior

Exterior	Wood, Stone, Vinyl
Exterior Features	Fenced, Flat Site, Landscaped, Level Land, Playground Nearby, Schools, Shopping Nearby, See Remarks
Roof	Asphalt Shingles

Construction	Wood, Stone, Vinyl
Foundation	Concrete Perimeter

**Additional Information**

Date Listed	April 7th, 2025
Days on Market	14
Zoning	Zone 24

DATA IS DEEMED RELIABLE BUT IS NOT GUARANTEED ACCURATE BY THE REALTORS® ASSOCIATION OF EDMONTON. COPYRIGHT 2025 BY THE REALTORS® ASSOCIATION OF EDMONTON. ALL RIGHTS RESERVED.Trademarks are owned or controlled by the Canadian Real Estate Association (CREA) and identify real estate professionals who are members of CREA (REALTOR®, REALTORS®) and/or the quality of services they provide (MLS®, Multiple Listing Service®)

Listing information last updated on April 21st, 2025 at 3:17pm MDT