

\$539,900 - 13906 146 Avenue, Edmonton

MLS® #E4429324

\$539,900

4 Bedroom, 3.50 Bathroom, 1,508 sqft

Single Family on 0.00 Acres

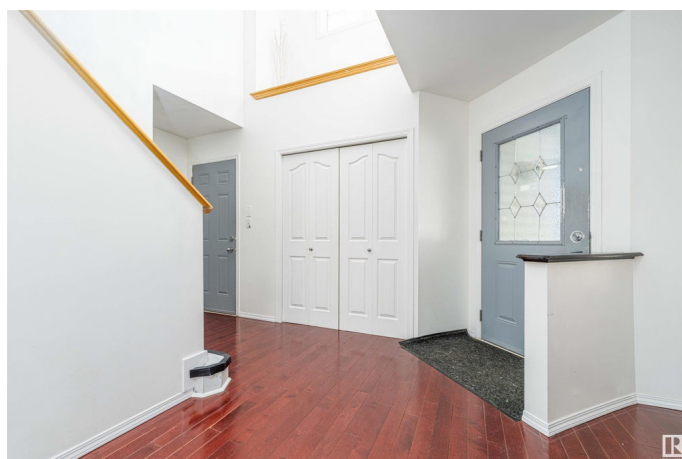
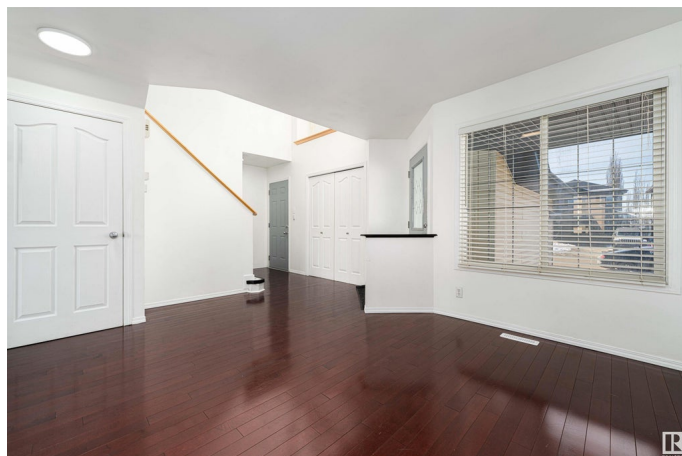
Cumberland, Edmonton, AB

Welcome to the Property that has everything you need. Very close to a public k-9 school Hilwie Hamdon, just a min walk away with an after school Ymca run daycare. Nestled closely to dozens of restaurants and all kinds of markets such as Lucky, Superstore, just to many to mention. Public transportation just steps away, lots of entertainment and more and quick access to the Henday and Yellowed Trail. Like gardening? Lots of space in the backyard , already set up waiting for your touch, whether to grow veggies or some nice flowers. Welcome home :)

Built in 2005

Essential Information

MLS® #	E4429324
Price	\$539,900
Bedrooms	4
Bathrooms	3.50
Full Baths	3
Half Baths	1
Square Footage	1,508
Acres	0.00
Year Built	2005
Type	Single Family
Sub-Type	Detached Single Family
Style	2 Storey



Status	Active
--------	--------

Community Information

Address	13906 146 Avenue
Area	Edmonton
Subdivision	Cumberland
City	Edmonton
County	ALBERTA
Province	AB
Postal Code	T6V 1X9

Amenities

Amenities	Vinyl Windows
Parking	Double Garage Attached

Interior

Interior Features	ensuite bathroom
Appliances	Dishwasher - Energy Star, Dryer, Garage Control, Garage Opener, Hood Fan, Refrigerator, Storage Shed, Stove-Electric, Washer, Window Coverings, See Remarks
Heating	Forced Air-1, Natural Gas
Stories	3
Has Basement	Yes
Basement	Full, Finished

Exterior

Exterior	Wood, Vinyl
Exterior Features	Playground Nearby, Schools, Shopping Nearby
Roof	Asphalt Shingles
Construction	Wood, Vinyl
Foundation	Concrete Perimeter

Additional Information

Date Listed	April 4th, 2025
Days on Market	38
Zoning	Zone 27

DATA IS DEEMED RELIABLE BUT IS NOT GUARANTEED ACCURATE BY THE REALTORS® ASSOCIATION OF EDMONTON. COPYRIGHT 2025 BY THE REALTORS® ASSOCIATION OF EDMONTON. ALL RIGHTS RESERVED. Trademarks are owned or controlled by the Canadian Real Estate Association (CREA) and identify real estate professionals who are members of CREA (REALTOR®, REALTORS®) and/or the quality of services they

provide (MLS®®, Multiple Listing Service®®)
Listing information last updated on May 12th, 2025 at 12:32am MDT