

# \$769,900 - 1135 Gyrfalcon Crescent, Edmonton

MLS® #E4428619

**\$769,900**

4 Bedroom, 3.00 Bathroom, 2,406 sqft

Single Family on 0.00 Acres

Hawks Ridge, Edmonton, AB

Brand new build 2406 Sq Ft 2 storey home on a corner lot with a private and amazing location backing a quiet walking path, treeline and protected green space. This home has a open concept with 4 bedrooms upstairs with a beautiful ensuite bath with tub and enclosed modern glass shower and second floor laundry and also a large bonus room overlooking a modern concept main floor with high ceilings and modern finishing's. The home also features a SEPERATE SIDE ENTRANCE to basement with potential for a legal secondary suite. The main floor also has a office/Den area and a beautiful kitchen area with a extra butlers pantry/spice kitchen and large mud room off the back garage door and a full bath on the main. This home is amazing and provides perfect spaces for a growing family.

Built in 2025

## Essential Information

|                |           |
|----------------|-----------|
| MLS® #         | E4428619  |
| Price          | \$769,900 |
| Bedrooms       | 4         |
| Bathrooms      | 3.00      |
| Full Baths     | 3         |
| Square Footage | 2,406     |
| Acres          | 0.00      |
| Year Built     | 2025      |



Type Single Family  
 Sub-Type Detached Single Family  
 Style 2 Storey  
 Status Active

**Community Information**

Address 1135 Gyrfalcon Crescent  
 Area Edmonton  
 Subdivision Hawks Ridge  
 City Edmonton  
 County ALBERTA  
 Province AB  
 Postal Code T5S 0S5

**Amenities**

Amenities Ceiling 9 ft., See Remarks  
 Parking Spaces 4  
 Parking Double Garage Attached

**Interior**

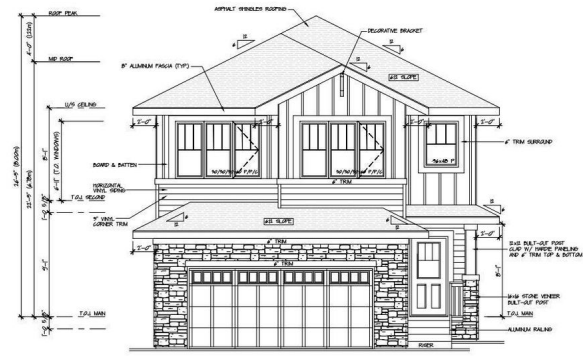
Interior Features ensuite bathroom  
 Appliances See Remarks  
 Heating Forced Air-1, Natural Gas  
 Fireplace Yes  
 Fireplaces Insert  
 Stories 2  
 Has Basement Yes  
 Basement Full, Unfinished

**Exterior**

Exterior Wood, Vinyl  
 Exterior Features Cul-De-Sac, See Remarks  
 Roof Asphalt Shingles  
 Construction Wood, Vinyl  
 Foundation Concrete Perimeter

**Additional Information**

Date Listed April 2nd, 2025  
 Days on Market 5



Front Elevation



DATA IS DEEMED RELIABLE BUT IS NOT GUARANTEED ACCURATE BY THE REALTORS® ASSOCIATION OF EDMONTON. COPYRIGHT 2025 BY THE REALTORS® ASSOCIATION OF EDMONTON. ALL RIGHTS RESERVED. Trademarks are owned or controlled by the Canadian Real Estate Association (CREA) and identify real estate professionals who are members of CREA (REALTOR®, REALTORS®) and/or the quality of services they provide (MLS®, Multiple Listing Service®)

Listing information last updated on April 7th, 2025 at 9:32pm MDT