

Courtesy Of Mason Salame and Neithan Salame Of RE/MAX River City

\$869,900 - 1133 Gyrfalcon Crescent, Edmonton

MLS® #E4428602

\$869,900

4 Bedroom, 3.00 Bathroom, 2,540 sqft

Single Family on 0.00 Acres

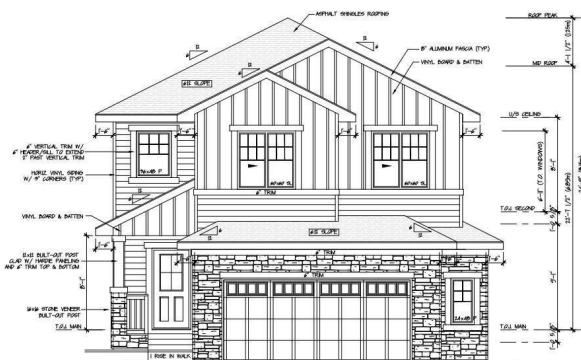
Hawks Ridge, Edmonton, AB

FINESSE/VANGUARD BUILT HOMES quality and experience is evident in this WALKOUT BASEMENT Brand new build 2540 Sq Ft 2 storey home with a roaring open concept ceiling, 9 foot ceilings on the main and on the second floor, 8 foot interior doors and a private and amazing location on a pie shaped lot. This home has a open concept with 4 bedrooms upstairs with a beautiful ensuite bath with tub and enclosed modern glass shower and second floor laundry and also a large bonus room overlooking a modern concept main floor with high ceilings and modern finishing's. The main floor also has a office/Den area and a beautiful kitchen area with a extra butlers pantry/spice kitchen and large mud room off the back garage door and a full bath on the main. This home is amazing and provides perfect spaces for a growing family. Still time to choose interior color's and some finishing's to make this home feel custom to your needs

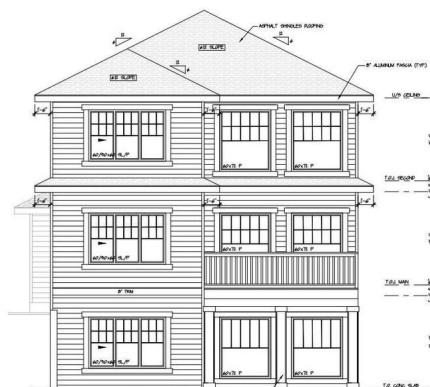
Built in 2025

Essential Information

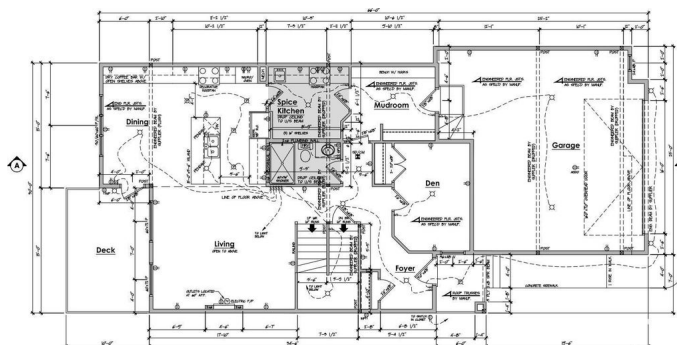
| | |
|------------|-----------|
| MLS® # | E4428602 |
| Price | \$869,900 |
| Bedrooms | 4 |
| Bathrooms | 3.00 |
| Full Baths | 3 |



Front Elevation



Rear Elevation



Main Floor Plan
1190 sq ft Ceiling

| | |
|----------------|------------------------|
| Square Footage | 2,540 |
| Acres | 0.00 |
| Year Built | 2025 |
| Type | Single Family |
| Sub-Type | Detached Single Family |
| Style | 2 Storey |
| Status | Active |

Community Information

| | |
|-------------|-------------------------|
| Address | 1133 Gyrfalcon Crescent |
| Area | Edmonton |
| Subdivision | Hawks Ridge |
| City | Edmonton |
| County | ALBERTA |
| Province | AB |
| Postal Code | T5S 0S5 |

Amenities

| | |
|----------------|------------------------------------|
| Amenities | Walkout Basement, See Remarks |
| Parking Spaces | 5 |
| Parking | Double Garage Attached, Over Sized |

Interior

| | |
|-------------------|---------------------------|
| Interior Features | ensuite bathroom |
| Appliances | See Remarks |
| Heating | Forced Air-1, Natural Gas |
| Fireplace | Yes |
| Fireplaces | Insert |
| Stories | 2 |
| Has Basement | Yes |
| Basement | See Remarks |

Exterior

| | |
|-------------------|---|
| Exterior | Wood, Vinyl |
| Exterior Features | Cul-De-Sac, No Back Lane, Park/Reserve, See Remarks |
| Roof | Asphalt Shingles |
| Construction | Wood, Vinyl |
| Foundation | Concrete Perimeter |

Additional Information

Date Listed April 2nd, 2025

Days on Market 10

Zoning Zone 59

DATA IS DEEMED RELIABLE BUT IS NOT GUARANTEED ACCURATE BY THE REALTORS® ASSOCIATION OF EDMONTON. COPYRIGHT 2025 BY THE REALTORS® ASSOCIATION OF EDMONTON. ALL RIGHTS RESERVED. Trademarks are owned or controlled by the Canadian Real Estate Association (CREA) and identify real estate professionals who are members of CREA (REALTOR®, REALTORS®) and/or the quality of services they provide (MLS®, Multiple Listing Service®)

Listing information last updated on April 12th, 2025 at 6:47am MDT