

Courtesy Of Shauna Allen Of Royal LePage Benchmark

\$600,000 - 10 Deer Park Bay, Spruce Grove

MLS® #E4428502

\$600,000

3 Bedroom, 3.50 Bathroom, 1,890 sqft
Single Family on 0.00 Acres

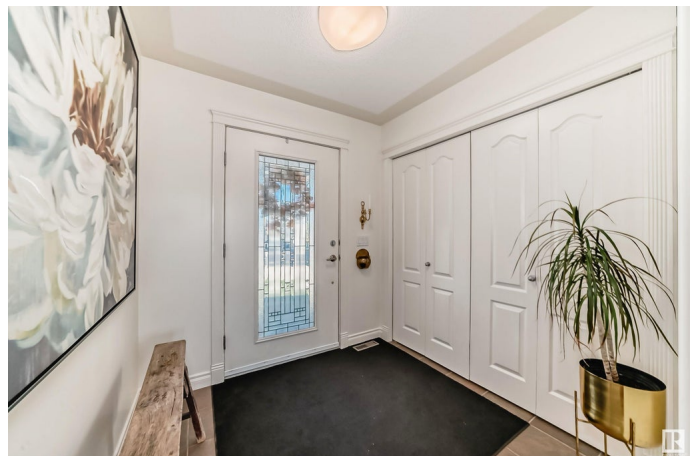
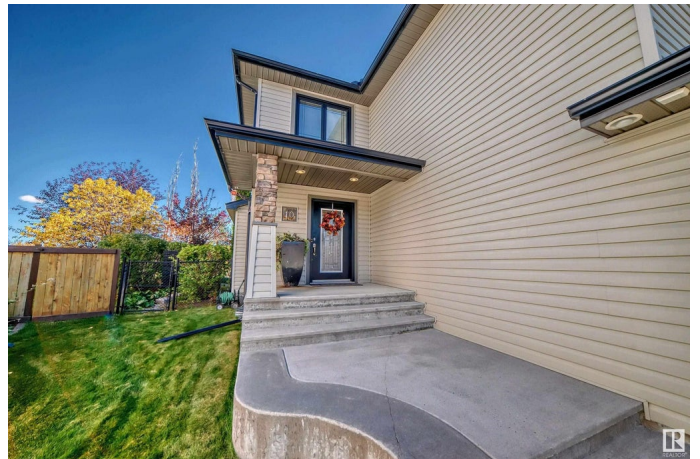
Deer Park_SPGR, Spruce Grove, AB

Hello, Gorgeous! Nestled in a quiet crescent in the desirable Deer Park neighbourhood, this 2-storey home offers 3 spacious bedrooms, 4 bathrooms, and 1890 sqft of beautifully designed living space. Enjoy the updated kitchen with sleek counters and an open layout perfect for entertaining. The bright living room features a gas fireplace with a stunning waterfall mantle. Upstairs, find a large bonus room with a custom entertainment unit and a luxurious primary suite with an oversized double head steam shower. The partly finished basement includes a full bath, & laundry, providing flexibility for your needs. Outside, your private oasis awaits with a professionally designed backyard, reflective pond with waterfall, deck, a large patio, and built-in BBQ gas hookup. Additional features include cherry hardwood, a drywalled & insulated double garage with drain, an irrigation system, & wired for sound. With space, style, and comfort, this home is a must-see! Check out the virtual tour

Built in 2004

Essential Information

MLS® #	E4428502
Price	\$600,000
Bedrooms	3
Bathrooms	3.50



Full Baths	3
Half Baths	1
Square Footage	1,890
Acres	0.00
Year Built	2004
Type	Single Family
Sub-Type	Detached Single Family
Style	2 Storey
Status	Active

Community Information

Address	10 Deer Park Bay
Area	Spruce Grove
Subdivision	Deer Park_SPGR
City	Spruce Grove
County	ALBERTA
Province	AB
Postal Code	T7X 4N7

Amenities

Amenities	Deck, Detectors Smoke, No Smoking Home
Parking Spaces	4
Parking	Double Garage Attached

Interior

Interior Features	ensuite bathroom
Appliances	Dishwasher-Built-In, Dryer, Fan-Ceiling, Freezer, Garage Control, Garage Opener, Garburator, Hood Fan, Humidifier-Power(Furnace), Refrigerator, Storage Shed, Stove-Gas, Washer, Window Coverings, Wine/Beverage Cooler
Heating	Forced Air-1, Natural Gas
Fireplace	Yes
Fireplaces	Stone Facing
Stories	2
Has Basement	Yes
Basement	Full, Partially Finished

Exterior

Exterior	Wood, Asphalt, Stone, Vinyl
----------	-----------------------------

Exterior Features	Backs Onto Park/Trees, Fenced, Fruit Trees/Shrubs, Golf Nearby, Landscaped, Private Setting, Schools, Shopping Nearby, Treed Lot
Roof	Asphalt Shingles
Construction	Wood, Asphalt, Stone, Vinyl
Foundation	Concrete Perimeter

Additional Information

Date Listed	April 1st, 2025
Days on Market	3
Zoning	Zone 91

DATA IS DEEMED RELIABLE BUT IS NOT GUARANTEED ACCURATE BY THE REALTORS® ASSOCIATION OF EDMONTON. COPYRIGHT 2025 BY THE REALTORS® ASSOCIATION OF EDMONTON. ALL RIGHTS RESERVED. Trademarks are owned or controlled by the Canadian Real Estate Association (CREA) and identify real estate professionals who are members of CREA (REALTOR®, REALTORS®) and/or the quality of services they provide (MLS®, Multiple Listing Service®)

Listing information last updated on April 4th, 2025 at 10:32am MDT