

\$500,000 - 16 5 Rondeau Drive, St. Albert

MLS® #E4428499

\$500,000

3 Bedroom, 2.50 Bathroom, 1,404 sqft

Condo / Townhouse on 0.00 Acres

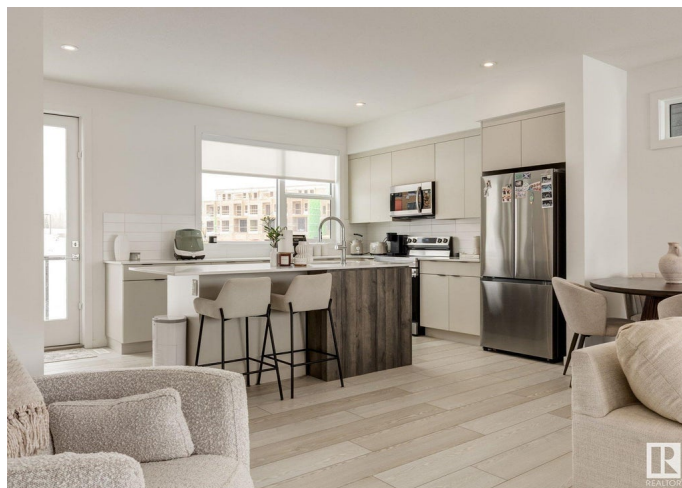
South Riel, St. Albert, AB

Stunning 3-storey townhouse with beautiful finishes! This 3 bedroom, 2.5 bathroom has a wonderful layout and modern finishes and colours throughout. Open concept kitchen allows for ideal entertainment flow and the quartz counters add a touch of luxury. Upstairs both bedrooms are a good size and the primary features a walk-in closet and ensuite bathroom. Laundry is convenient to both bedrooms. With summer coming you will be sure to enjoy your balcony, then come inside to the cool A/C; plus all outdoor maintenance is all taken care of so you can just relax! Close to Rondeau park and all conveniences.

Built in 2023

Essential Information

| | |
|----------------|-------------------|
| MLS® # | E4428499 |
| Price | \$500,000 |
| Bedrooms | 3 |
| Bathrooms | 2.50 |
| Full Baths | 2 |
| Half Baths | 1 |
| Square Footage | 1,404 |
| Acres | 0.00 |
| Year Built | 2023 |
| Type | Condo / Townhouse |
| Sub-Type | Townhouse |



| | |
|--------|----------|
| Style | 3 Storey |
| Status | Active |

Community Information

| | |
|-------------|--------------------|
| Address | 16 5 Rondeau Drive |
| Area | St. Albert |
| Subdivision | South Riel |
| City | St. Albert |
| County | ALBERTA |
| Province | AB |
| Postal Code | T8N 7X8 |

Amenities

| | |
|-----------|------------------------------|
| Amenities | Air Conditioner, See Remarks |
| Parking | Double Garage Attached |

Interior

| | |
|-------------------|--|
| Interior Features | ensuite bathroom |
| Appliances | Air Conditioning-Central, Dishwasher-Built-In, Dryer, Refrigerator, Stove-Electric, Washer, Window Coverings |
| Heating | Forced Air-1, Natural Gas |
| Stories | 3 |
| Has Basement | Yes |
| Basement | None, No Basement |

Exterior

| | |
|-------------------|--|
| Exterior | Wood, Brick, Fiber Cement |
| Exterior Features | Backs Onto Park/Trees, Landscaped, Park/Reserve, Playground Nearby |
| Roof | Asphalt Shingles |
| Construction | Wood, Brick, Fiber Cement |
| Foundation | Concrete Perimeter |

Additional Information

| | |
|----------------|-----------------|
| Date Listed | April 1st, 2025 |
| Days on Market | 78 |
| Zoning | Zone 24 |
| Condo Fee | \$206 |

DATA IS DEEMED RELIABLE BUT IS NOT GUARANTEED ACCURATE BY THE REALTORS® ASSOCIATION OF EDMONTON. COPYRIGHT 2025 BY THE REALTORS® ASSOCIATION OF EDMONTON. ALL RIGHTS RESERVED. Trademarks are owned or controlled by the Canadian Real Estate Association (CREA) and identify real

estate professionals who are members of CREA (REALTOR®®, REALTORS®®) and/or the quality of services they provide (MLS®®, Multiple Listing Service®®)

Listing information last updated on June 17th, 2025 at 10:02pm MDT