

Courtesy Of Charles K Ho Of Century 21 Masters

\$164,900 - 111 8735 165 Street, Edmonton

MLS® #E4427804

\$164,900

2 Bedroom, 1.00 Bathroom, 885 sqft
Condo / Townhouse on 0.00 Acres

West Meadowlark Park, Edmonton, AB

Perfect investment for investors or first time home buyer, 11th floor 2 bedroom unit with unobstructed view of the city. Low condo fee including all utilities (Heat, Water, and Electricity) Extremely convenience location within walking distance to West Edmonton Mall and future Valley Line LRT station.

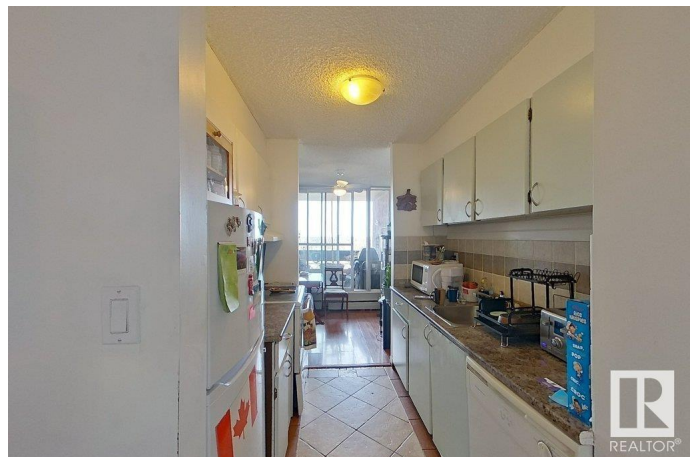
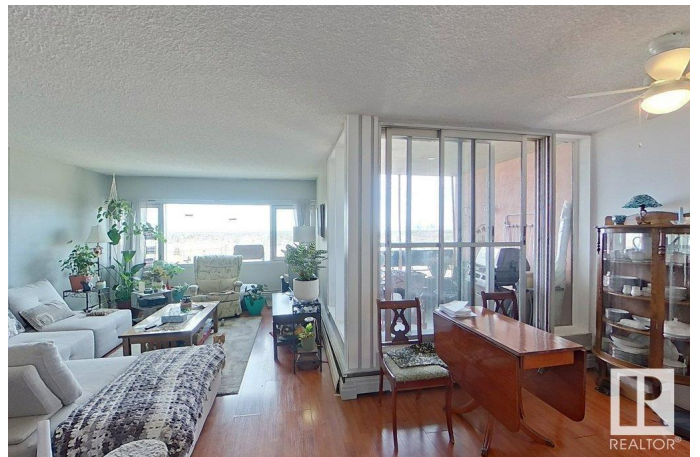
Built in 1970

Essential Information

MLS® #	E4427804
Price	\$164,900
Bedrooms	2
Bathrooms	1.00
Full Baths	1
Square Footage	885
Acres	0.00
Year Built	1970
Type	Condo / Townhouse
Sub-Type	Apartment High Rise
Style	Single Level Apartment
Status	Active

Community Information

Address	111 8735 165 Street
Area	Edmonton
Subdivision	West Meadowlark Park



City	Edmonton
County	ALBERTA
Province	AB
Postal Code	T5R 2R6

Amenities

Amenities	Detectors Smoke, Security Door, Storage-Locker Room
Parking Spaces	1
Parking	Parkade, Stall

Interior

Appliances	Dishwasher-Built-In, Hood Fan, Refrigerator, Stove-Electric
Heating	Baseboard, Water
# of Stories	17
Stories	1
Has Basement	Yes
Basement	None, No Basement

Exterior

Exterior	Concrete
Exterior Features	Public Transportation, Schools, Shopping Nearby
Roof	Tar & Gravel
Construction	Concrete
Foundation	Concrete Perimeter

School Information

Elementary	Aleda Patterson School
Middle	Alex Janvier School
High	Jasper Place School

Additional Information

Date Listed	March 26th, 2025
Days on Market	15
Zoning	Zone 22
Condo Fee	\$477

DATA IS DEEMED RELIABLE BUT IS NOT GUARANTEED ACCURATE BY THE REALTORS® ASSOCIATION OF EDMONTON. COPYRIGHT 2025 BY THE REALTORS® ASSOCIATION OF EDMONTON. ALL RIGHTS RESERVED. Trademarks are owned or controlled by the Canadian Real Estate Association (CREA) and identify real estate professionals who are members of CREA (REALTOR®, REALTORS®) and/or the quality of services they provide (MLS®, Multiple Listing Service®)

Listing information last updated on April 10th, 2025 at 5:17pm MDT