

\$580,000 - 3138 Magpie Way, Edmonton

MLS® #E4417809

\$580,000

4 Bedroom, 4.00 Bathroom, 1,815 sqft
Single Family on 0.00 Acres

Starling, Edmonton, AB

Stunning 1815 sq. ft. single-family detached home in Starling South, Edmonton! This beautifully designed property features a main floor with a full bath, bedroom/den with En-suite, spacious living room, dining area, and modern kitchen. Upstairs, find a bonus room, 3 bedrooms and 2 full bathrooms, including a luxurious primary suite. private side entrance for potential legal basement suite. Current status: permits (2025-03-17)

Built in 2025

Essential Information

MLS® #	E4417809
Price	\$580,000
Bedrooms	4
Bathrooms	4.00
Full Baths	4
Square Footage	1,815
Acres	0.00
Year Built	2025
Type	Single Family
Sub-Type	Detached Single Family
Style	2 Storey
Status	Active

Community Information

Address 3138 Magpie Way

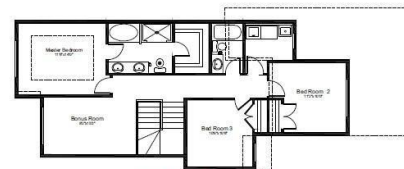


1815 SQ. FT + 2 Bedroom
DOUBLE ATTACHED CAR GARAGE

▶ 26' Pocket Two Story
▶ Legal Basement Suite (optional)
▶ (1 or 2 bedroom options available)



Main Floor Plan 824 sq. ft.



Upper Floor Plan 991 sq. ft.



Area	Edmonton
Subdivision	Starling
City	Edmonton
County	ALBERTA
Province	AB
Postal Code	T5S 0V4

Amenities

Amenities	Ceiling 9 ft., Exterior Walls- 2"x6", 9 ft. Basement Ceiling
Parking Spaces	2
Parking	Double Garage Attached

Interior

Interior Features	ensuite bathroom
Appliances	Builder Appliance Credit
Heating	Forced Air-1, Natural Gas
Fireplace	Yes
Fireplaces	Heatilator/Fan
Stories	2
Has Basement	Yes
Basement	Full, Unfinished

Exterior

Exterior	Wood, Vinyl
Exterior Features	Back Lane, Golf Nearby, Playground Nearby, Ravine View
Roof	Asphalt Shingles
Construction	Wood, Vinyl
Foundation	Concrete Perimeter

Additional Information

Date Listed	January 13th, 2025
Days on Market	86
Zoning	Zone 59

DATA IS DEEMED RELIABLE BUT IS NOT GUARANTEED ACCURATE BY THE REALTORS® ASSOCIATION OF EDMONTON. COPYRIGHT 2025 BY THE REALTORS® ASSOCIATION OF EDMONTON. ALL RIGHTS RESERVED. Trademarks are owned or controlled by the Canadian Real Estate Association (CREA) and identify real estate professionals who are members of CREA (REALTOR®, REALTORS®) and/or the quality of services they provide (MLS®, Multiple Listing Service®)

Listing information last updated on April 9th, 2025 at 12:47pm MDT