

# \$326,888 - 10341 149 Street, Edmonton

MLS® #E4409896

**\$326,888**

3 Bedroom, 2.00 Bathroom, 806 sqft  
Single Family on 0.00 Acres

Grovenor, Edmonton, AB

Calling for First Time Buyers, Investors, Developers. Large lot - 557.2 m2, Zoning RF3. House needs work! This Bungalow is in Grovenor. Main floos offers a good size living room, kitchen, 2 bedrooms and a full bath. New Flooring and carpet. The Basement finished with a Mother-in-Law Suite: kitchen, bedroom, full bath, and a living room. Close to all amenities: Schools, bus stop, shopping.

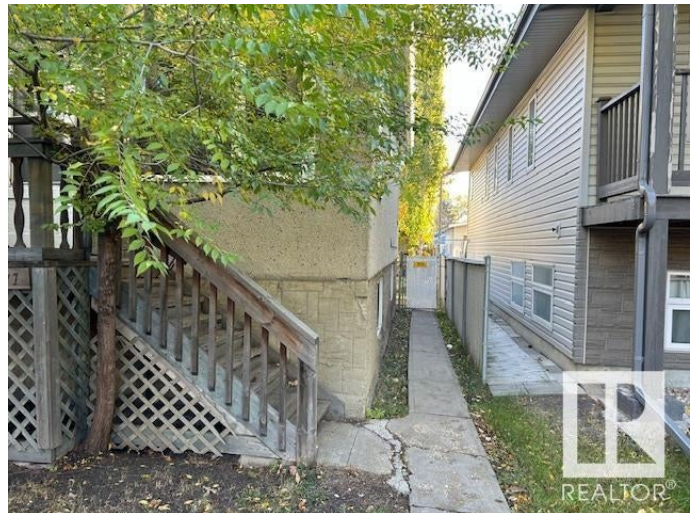
Built in 1951

## Essential Information

MLS® #	E4409896
Price	\$326,888
Bedrooms	3
Bathrooms	2.00
Full Baths	2
Square Footage	806
Acres	0.00
Year Built	1951
Type	Single Family
Sub-Type	Detached Single Family
Style	Bungalow
Status	Active

## Community Information

Address	10341 149 Street
Area	Edmonton



Subdivision	Grovenor
City	Edmonton
County	ALBERTA
Province	AB
Postal Code	T5P 1L4

### **Amenities**

Amenities	Detectors Smoke, No Animal Home, No Smoking Home
Parking	Rear Drive Access, See Remarks

### **Interior**

Appliances	Refrigerator
Heating	Forced Air-1, Natural Gas
Stories	2
Has Basement	Yes
Basement	Full, Finished

### **Exterior**

Exterior	Wood, Stucco
Exterior Features	Back Lane, Flat Site, Fruit Trees/Shrubs, Landscaped, Public Transportation, Schools, Shopping Nearby
Roof	Asphalt Shingles
Construction	Wood, Stucco
Foundation	Concrete Perimeter

### **Additional Information**

Date Listed	October 10th, 2024
Days on Market	181
Zoning	Zone 21

DATA IS DEEMED RELIABLE BUT IS NOT GUARANTEED ACCURATE BY THE REALTORS® ASSOCIATION OF EDMONTON. COPYRIGHT 2025 BY THE REALTORS® ASSOCIATION OF EDMONTON. ALL RIGHTS RESERVED. Trademarks are owned or controlled by the Canadian Real Estate Association (CREA) and identify real estate professionals who are members of CREA (REALTOR®, REALTORS®) and/or the quality of services they provide (MLS®, Multiple Listing Service®)

Listing information last updated on April 9th, 2025 at 1:47pm MDT